

2. Allegro

The image displays a musical score for a piece titled "2. Allegro". The score is written in bass clef with a common time signature (C). It consists of ten staves of music, each beginning with a measure number in a box: 3, 5, 8, 10, 14, 18, 20, 23, and 26. The music features a variety of rhythmic patterns, including eighth and sixteenth notes, and rests. There are several accidentals, specifically sharps (#), placed above notes in measures 3, 5, 8, 10, 14, 18, 20, and 23. A fermata symbol is present above the final note of measure 20. The notation includes stems, beams, and flags to indicate precise rhythmic values. The overall style is characteristic of a classical or early modern instrumental or vocal piece.

29



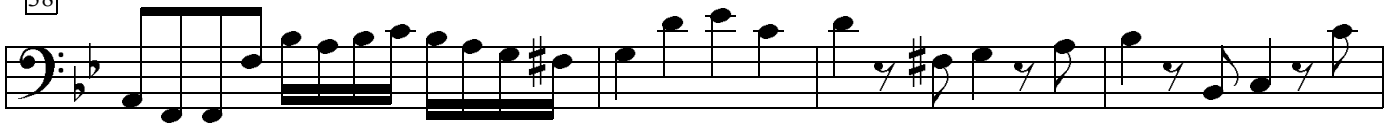
33



35



38



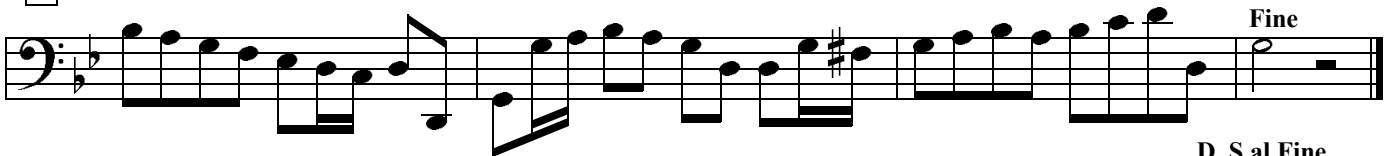
42



45



47



D. S al Fine