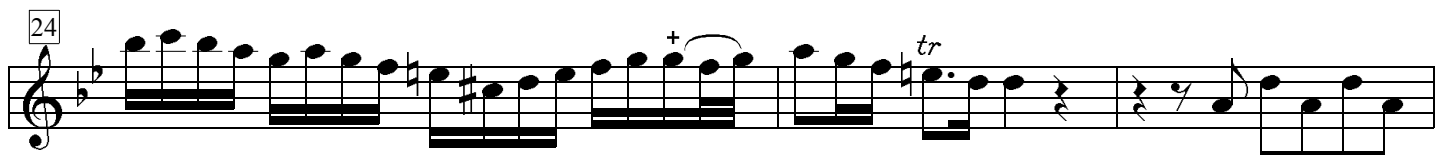
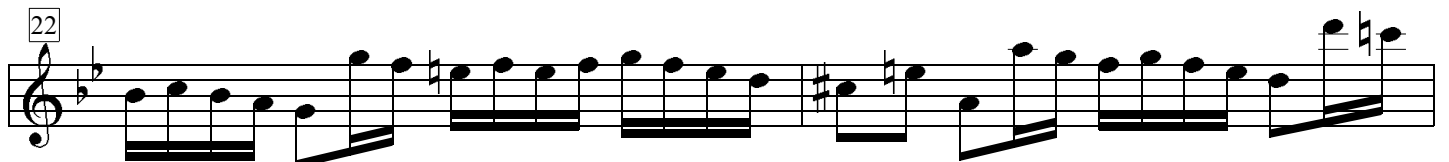
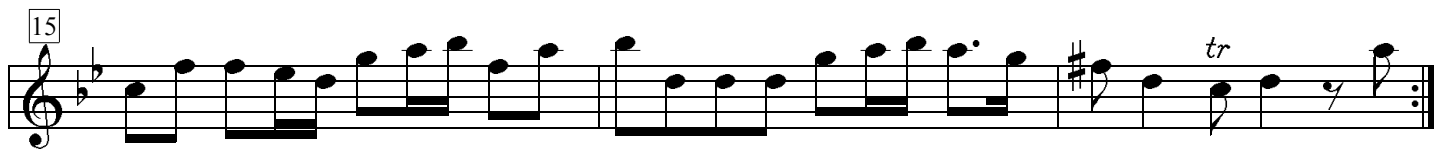
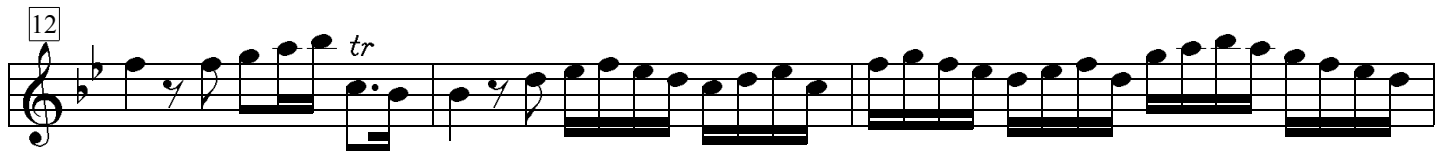
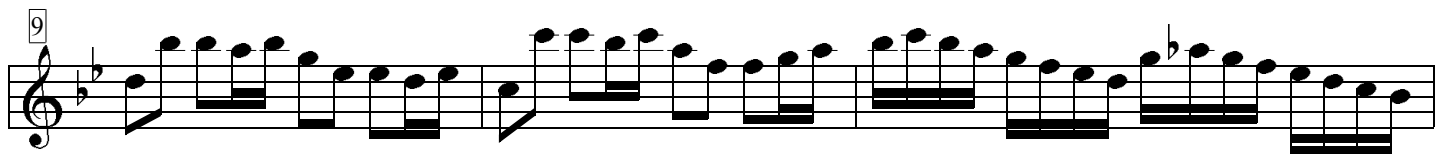


2. Allegro



27

30

33

37

40

42

tr

tr

The image shows a musical score for a single melodic line, likely for a voice or instrument. The score is written on a single staff in treble clef, with a key signature of two flats (B-flat and E-flat) and a common time signature. The music consists of six lines of notation, each starting with a measure number in a box: 27, 30, 33, 37, 40, and 42. The notation includes various rhythmic values (quarter, eighth, and sixteenth notes), rests, and accidentals (sharps and naturals). Trills are indicated by the abbreviation 'tr' above certain notes in measures 30, 40, and 42. The piece concludes with a double bar line and a repeat sign at the end of the sixth line.