

Ouverture

TWV 55:a3

Georg Philipp Telemann

Viola



7



13



20

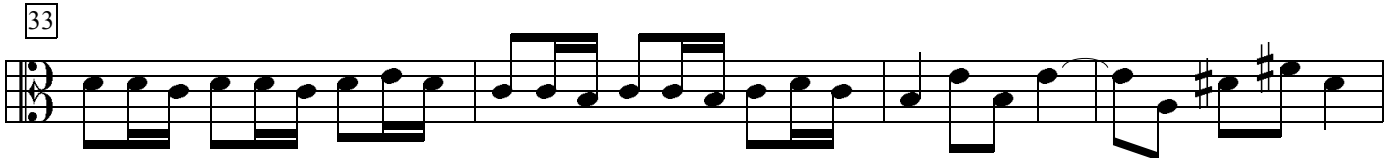


28

2



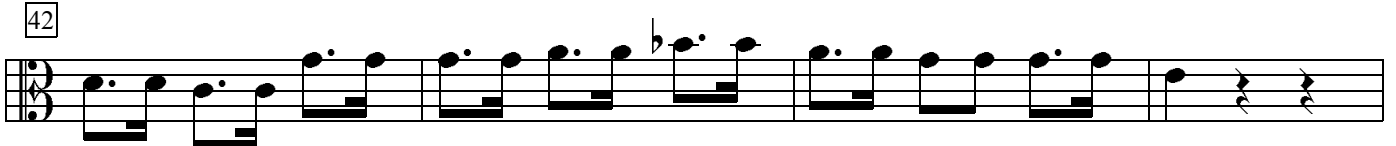
33



37

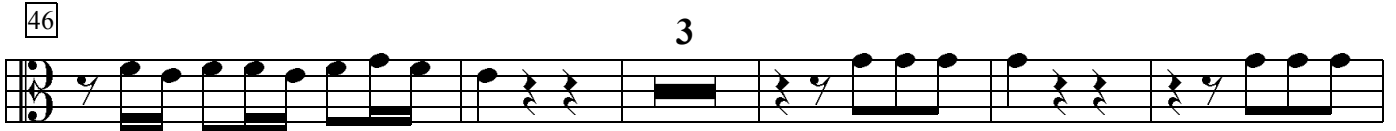


42



46

3



54



60



65

7



77

81

85

90

94

99

104

109

114

120

126

1.

2.

Detailed description: This image shows a musical score for a bass clef instrument, likely a cello or double bass. The score consists of ten staves of music, each starting with a measure number in a box. The key signature has one flat (B-flat) and one sharp (F-sharp). The time signature is 3/4. The music features a variety of rhythmic patterns, including eighth notes, quarter notes, and dotted notes. There are several rests and dynamic markings. The final measure (126) includes a first ending (1.) and a second ending (2.).