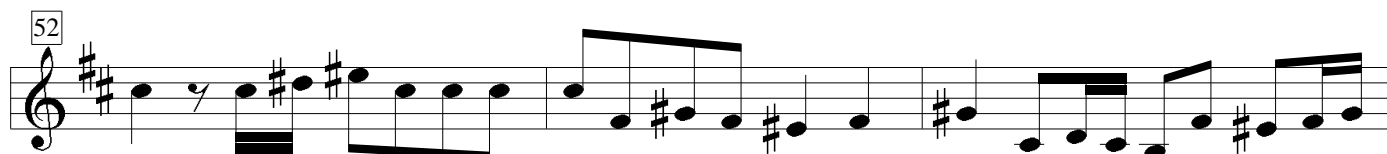
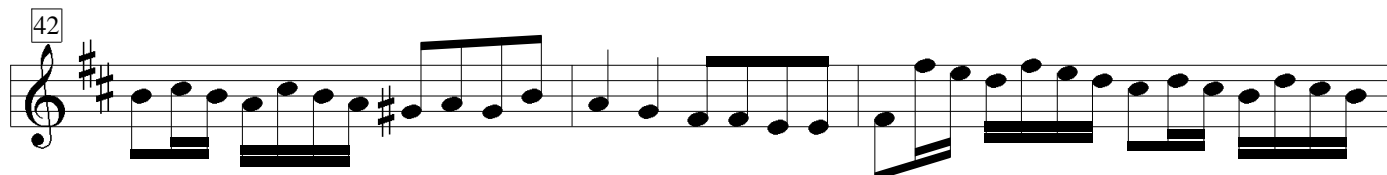
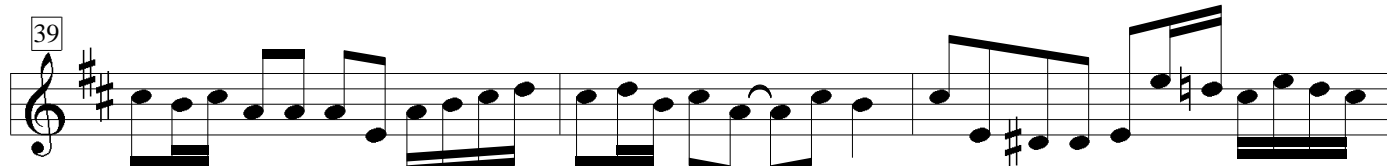
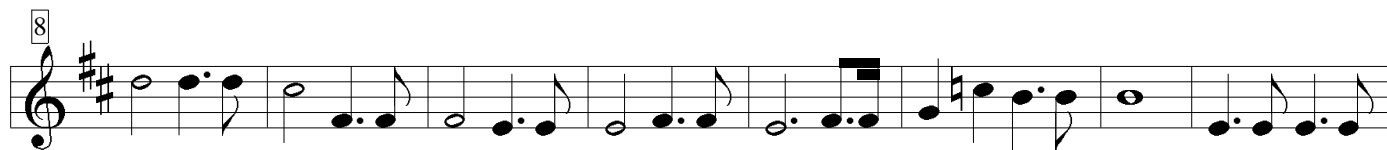


# "La Lyra"

## 1. Ouverture

G. Ph. Telemann

Violino 2



55

58

62

65

68

72

75

80

87

1. 2.

The image shows a musical score for a piece titled "La Lyra I p. 2". The score is written in treble clef with a key signature of two sharps (F# and C#). It consists of nine staves of music, each starting with a measure number in a box: 55, 58, 62, 65, 68, 72, 75, 80, and 87. The music is primarily composed of eighth and sixteenth notes, often beamed together in groups. There are several rests and dynamic markings throughout. At the end of the piece, there are two first endings, labeled "1." and "2.", which lead to a final cadence. The paper is white with black ink for the notes and staff lines.