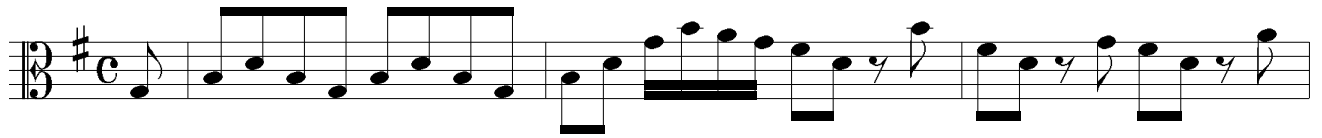
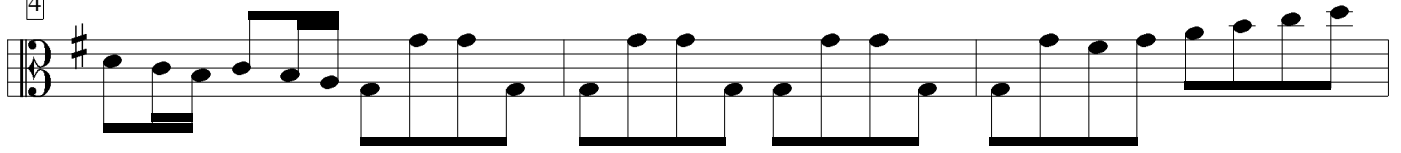


Viola 3



4



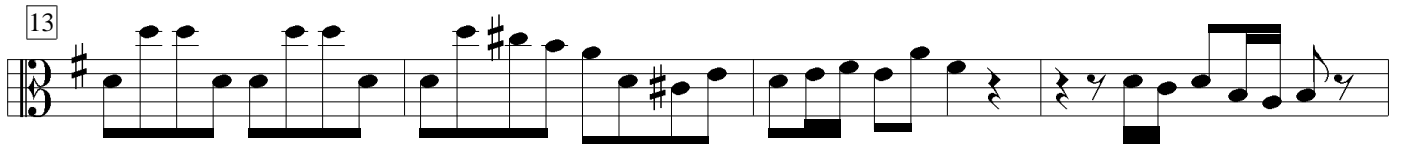
7



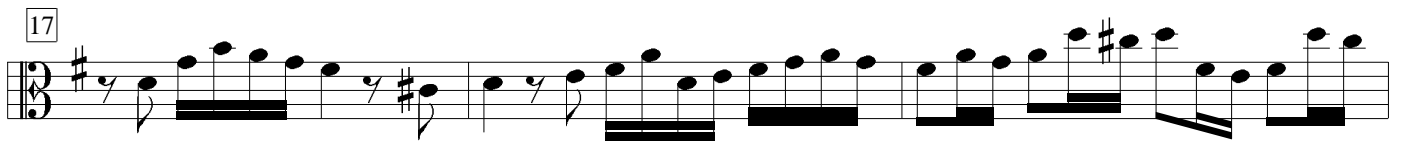
10



13



17



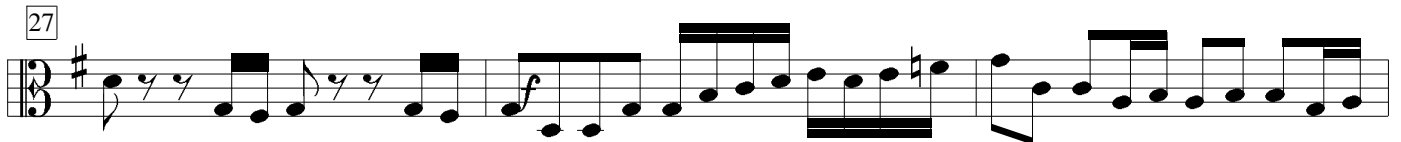
20



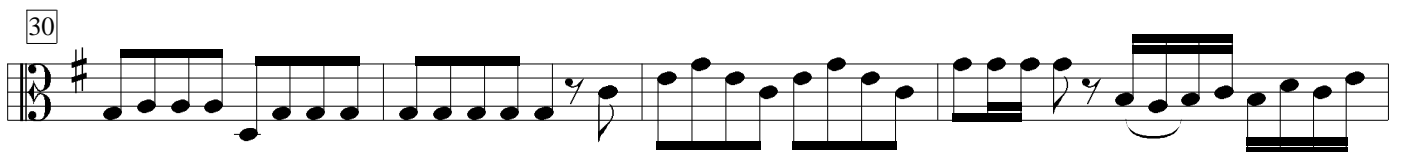
23



27



30



34

37

40

44

47 *p* *f*

51 *p* *f*

55

58

61 *f* *p* *f*

65 *p*

68 *f*

Detailed description: This image shows a musical score for a bass clef instrument, likely a cello or double bass, in the key of D major (one sharp). The score consists of ten staves, each labeled with a measure number in a box at the beginning. The music is written in a rhythmic style with various note values, including eighth and sixteenth notes, and rests. Dynamic markings such as *p* (piano) and *f* (forte) are placed above the notes to indicate volume changes. Some notes are grouped with slurs, and there are occasional accents. The overall structure is a continuous melodic line with some rhythmic complexity.

71

74

78

85

89

91

95

99

102

105

107

110

113

116

120

124

127

131

135

Adagio