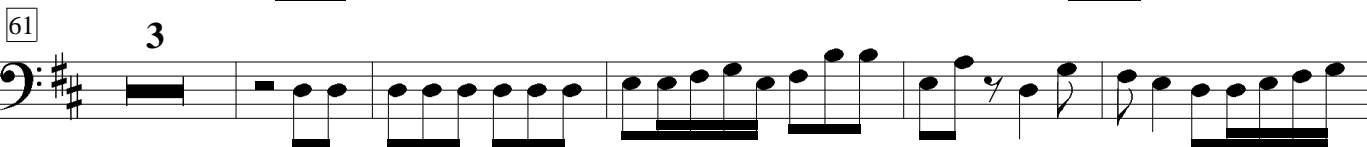
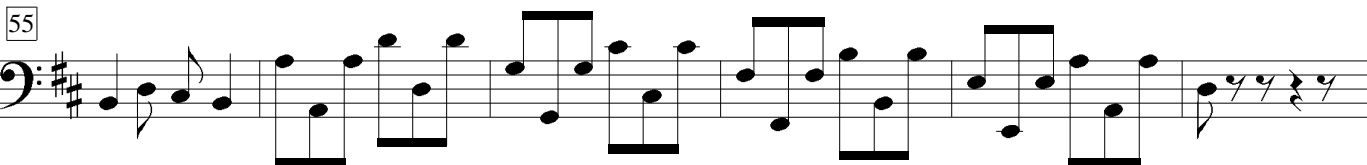
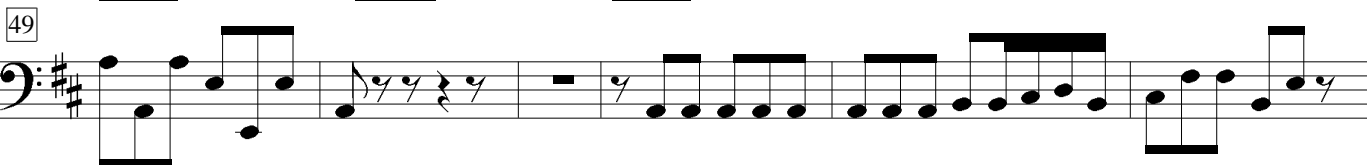
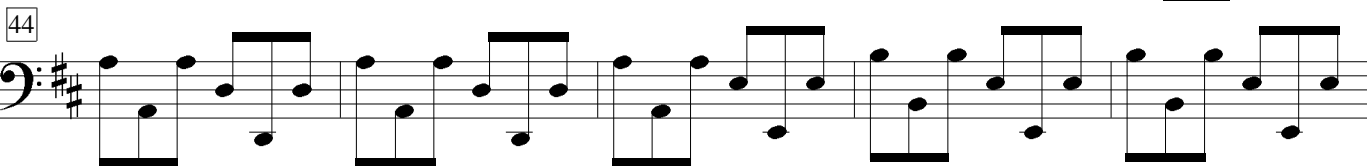
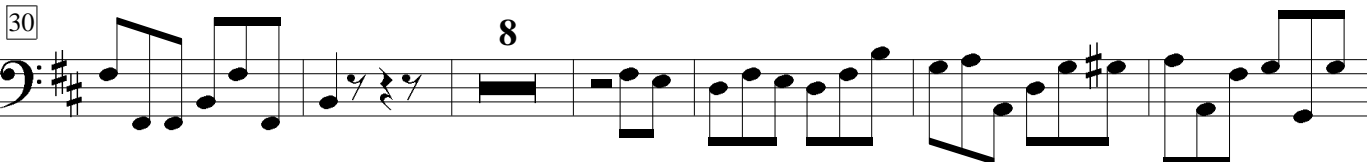
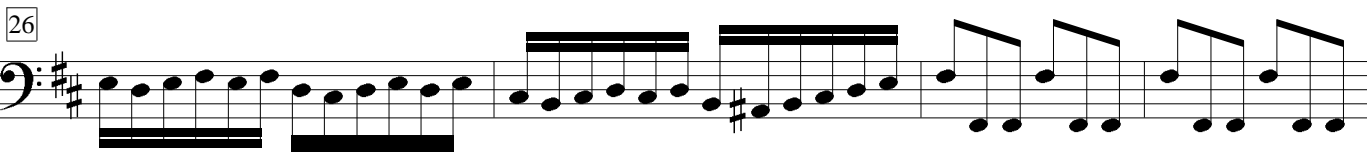
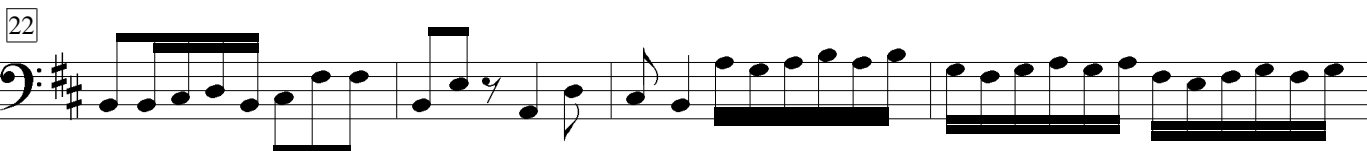
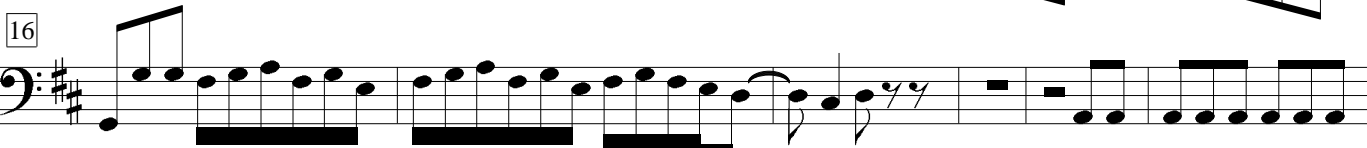
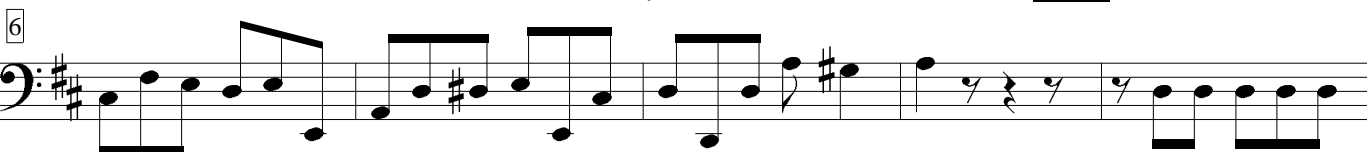


# IV Vivace

B.c.



69

75

81

87

91

The image shows five staves of musical notation for a bass clef instrument in the key of D major. The notation includes various rhythmic values such as eighth and sixteenth notes, rests, and beams. The first staff (measures 69-74) features a steady eighth-note pattern. The second staff (measures 75-80) introduces sixteenth-note patterns. The third staff (measures 81-86) continues with eighth-note patterns and includes some beamed sixteenth notes. The fourth staff (measures 87-90) shows a mix of eighth and sixteenth notes. The fifth staff (measures 91) concludes with a half note and a quarter note. The key signature is D major, indicated by two sharps (F# and C#).