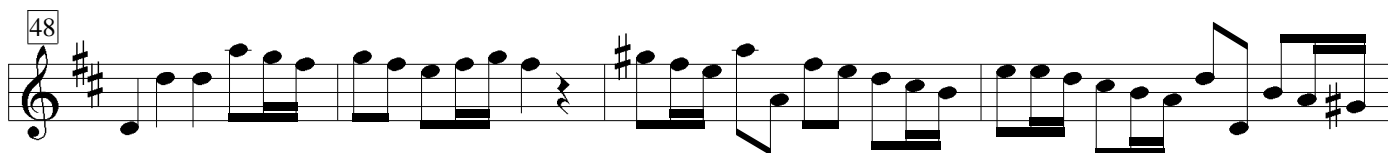
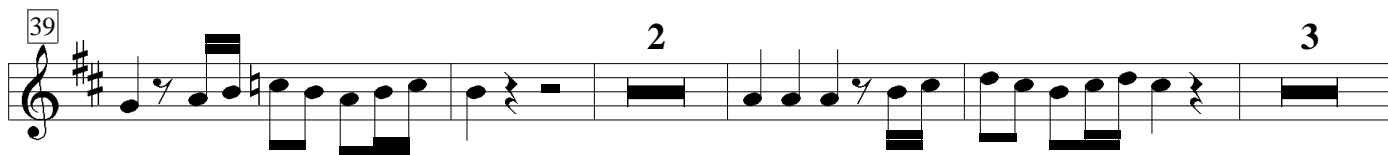
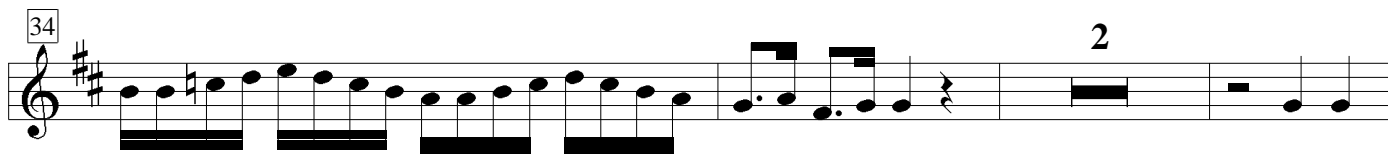
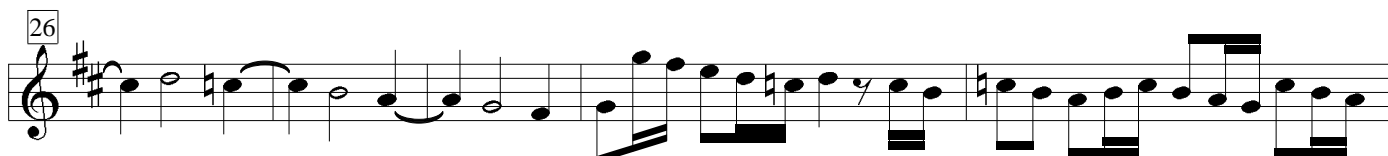
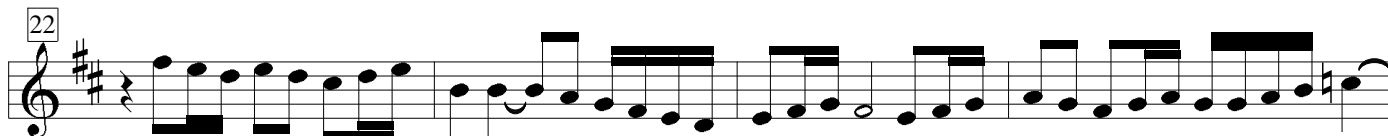
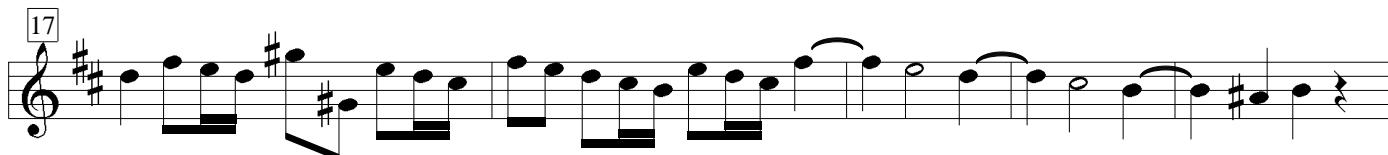
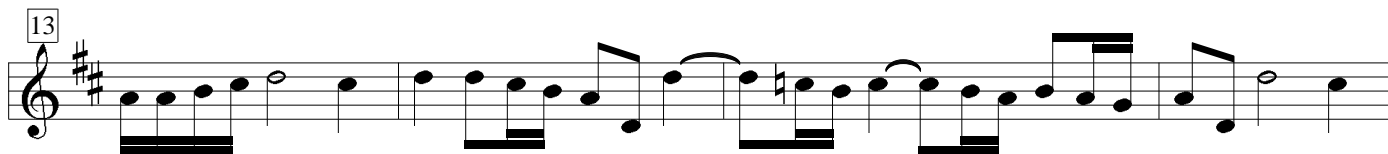
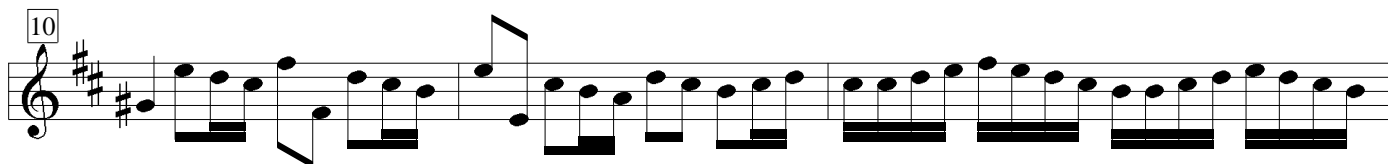
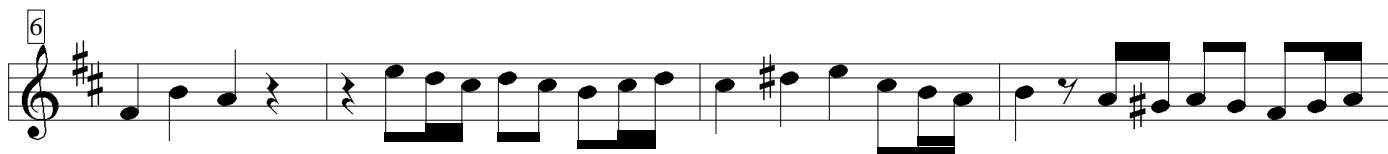
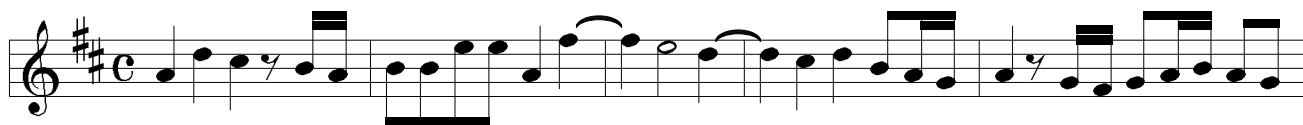


II Allegro

Oboe 2



Musical score for Telemann: II p. 2, measures 52-66. The score is written in treble clef with a key signature of two sharps (F# and C#). The music consists of five staves of notation. Measure 52 starts with a treble clef and a key signature of two sharps. The melody is primarily eighth and sixteenth notes. Measure 57 shows a change in the melodic line with some quarter notes. Measure 61 continues the eighth-note pattern. Measure 63 features a more complex rhythmic pattern with sixteenth notes and rests. Measure 66 concludes the section with a final cadence, including a fermata over the final note.