

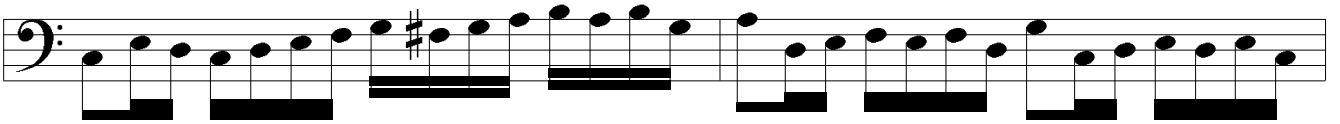
# Concerto

Johann Friedrich Fasch

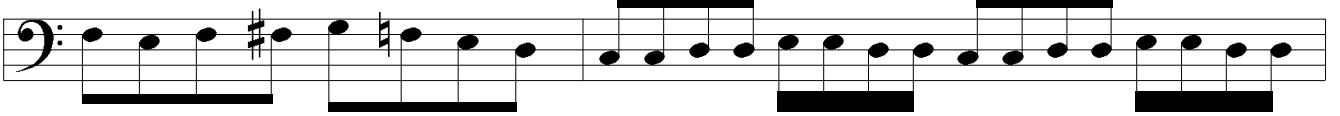
B.c.

The image displays a musical score for a basso continuo (B.c.) part, consisting of ten staves of music. The score is written in bass clef with a common time signature (C). The key signature is one sharp (F#), indicating the key of D major. The music features a variety of rhythmic patterns, including eighth and sixteenth notes, and rests. Measure numbers 5, 8, 10, 13, 15, 17, 23, 25, and 28 are indicated in small boxes at the beginning of their respective staves. A triplet of eighth notes is marked with a '3' above it in measure 17. The notation includes various ornaments and articulation marks, such as slurs and accents.

32



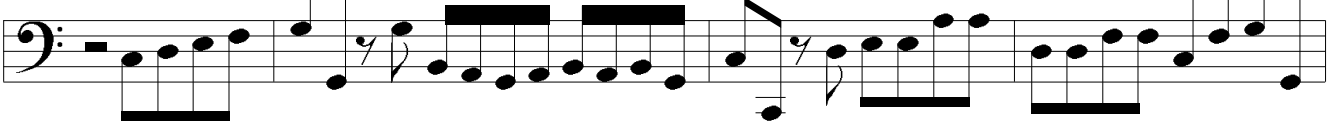
34



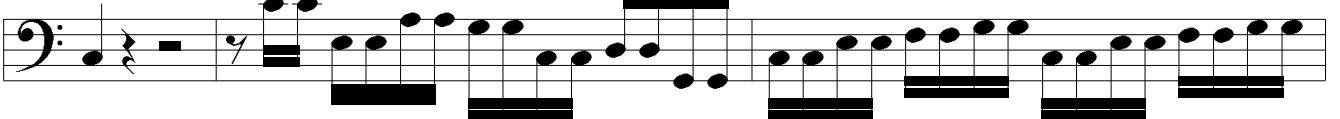
36



40



44



47

