

2. tacet

3. Allegro

B. c.

First musical staff in bass clef, 2/4 time signature. It begins with a *p* dynamic marking. The melody consists of eighth and quarter notes.

10

Second musical staff, starting at measure 10. It features a *f* dynamic marking followed by a *p* dynamic marking. The melody continues with eighth and quarter notes.

17

Third musical staff, starting at measure 17. It features a *f* dynamic marking. The melody continues with eighth and quarter notes.

25

Fourth musical staff, starting at measure 25. It features a *p* dynamic marking. The melody continues with eighth and quarter notes.

33

Fifth musical staff, starting at measure 33. It is marked *Solo*. The melody continues with eighth and quarter notes.

41

Sixth musical staff, starting at measure 41. The melody continues with eighth and quarter notes, including a sharp sign on the eighth note of the second measure.

48

Seventh musical staff, starting at measure 48. It features a *f Tutti* dynamic marking. The melody continues with eighth and quarter notes, including a sharp sign on the eighth note of the second measure.

55

Eighth musical staff, starting at measure 55. The melody continues with eighth and quarter notes, including a sharp sign on the eighth note of the second measure.

63

Ninth musical staff, starting at measure 63. It is marked *Solo*. The melody continues with eighth and quarter notes, including a sharp sign on the eighth note of the second measure.

70

Tenth musical staff, starting at measure 70. The melody continues with eighth and quarter notes, including a sharp sign on the eighth note of the second measure.

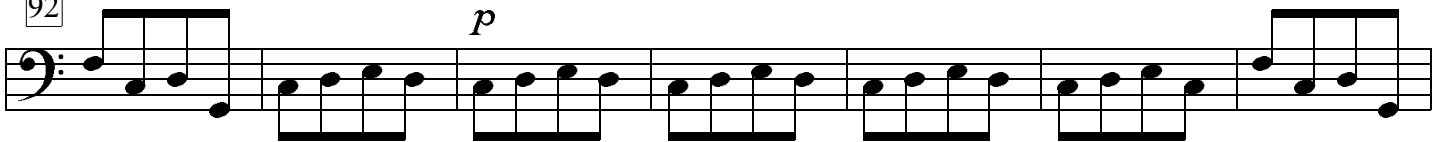
77

Eleventh musical staff, starting at measure 77. The melody continues with eighth and quarter notes.

84

f Tutti

92

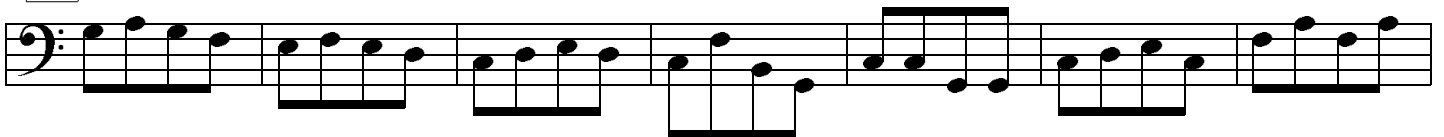
p

99

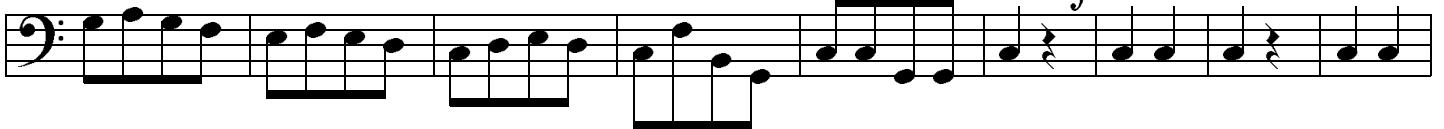
Solo



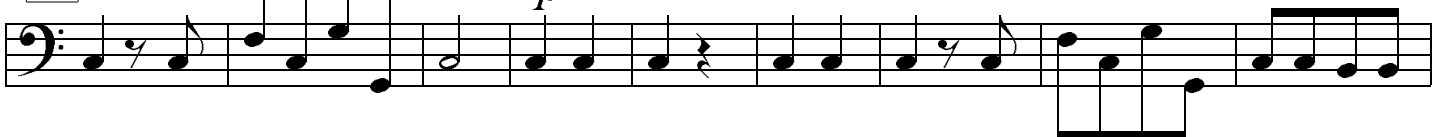
109



116

f Tutti

125

*p**f*

134

*p**f*

141



149

