

# Brandenburgische Konzert Nr. 4

BWV 1049

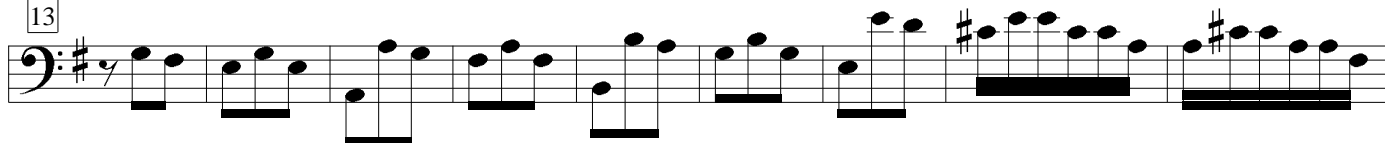
J. S. Bach

3

Violoncello



13



22



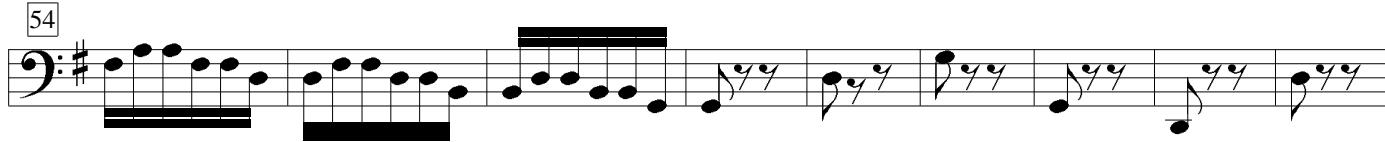
35



43



54



63



78



91



104



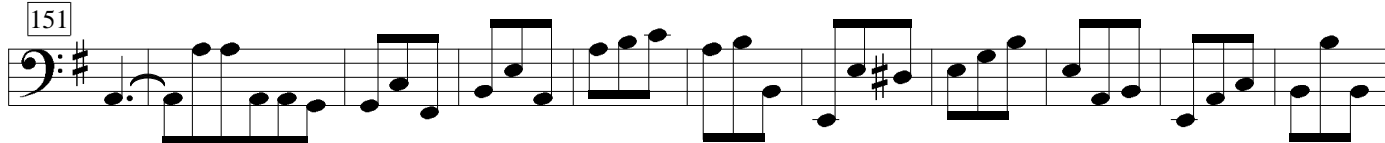
118



135



151



162

172

182 3

196

207

218

229

241

253

265

274

284

295

Detailed description: This image shows a page of musical notation for the first part of the Notebook for Anna Bach, BWV 1049. The score is written in bass clef with a key signature of one sharp (F#). It consists of 13 staves of music, each starting with a measure number in a box. The notation includes various rhythmic values such as eighth and sixteenth notes, rests, and accidentals. A triplet of eighth notes is indicated by a '3' above the staff at measure 182. The music is a single melodic line.

304

318

334

344 3

357

366 3

379

387

398

407 3

422

Detailed description: This image shows a page of musical notation for the first part of the Minuet in G major, BWV 1049, page 3. The score is written in bass clef with a key signature of one sharp (F#). It consists of ten staves of music, each starting with a measure number in a box. The notation includes various rhythmic values such as eighth and sixteenth notes, often beamed together, and rests. There are several instances of triplets, indicated by a '3' above the notes. The piece concludes with a final measure on the tenth staff.