

Brandenburgische Konzert Nr. 4

BWV 1049

J. S. Bach

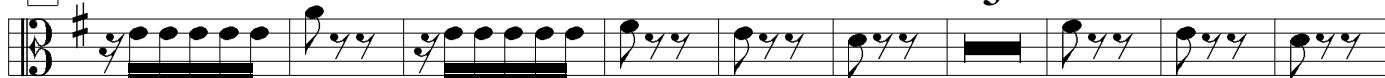
Viola



12



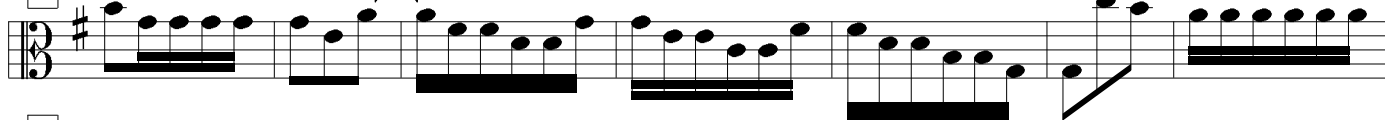
20



32



42



49



57



70



79



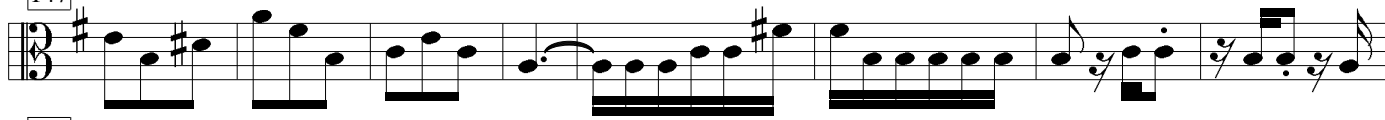
104



134



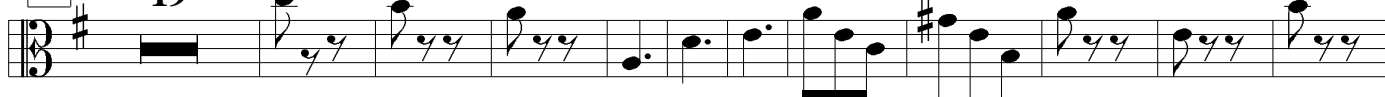
147



155



166



196

207

223

232 5

247 5

262 8

276

284 4

298 8

321

333

341 3

353

362 3

373

383

391

399

411

421

3

The image displays a musical score for the bass clef, spanning measures 373 to 421. The key signature is one sharp (F#). The score is divided into six systems. The first system (measures 373-382) features a steady eighth-note pattern. The second system (measures 383-390) introduces sixteenth-note runs. The third system (measures 391-398) continues with sixteenth-note patterns. The fourth system (measures 399-410) includes a triplet of eighth notes marked with a '3' above the staff. The fifth system (measures 411-420) shows a mix of eighth and sixteenth notes. The sixth system (measures 421-428) concludes with a final note and a fermata.