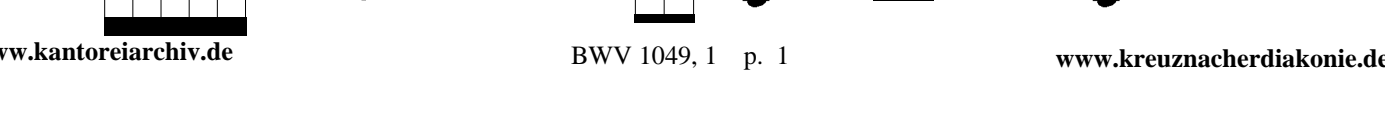
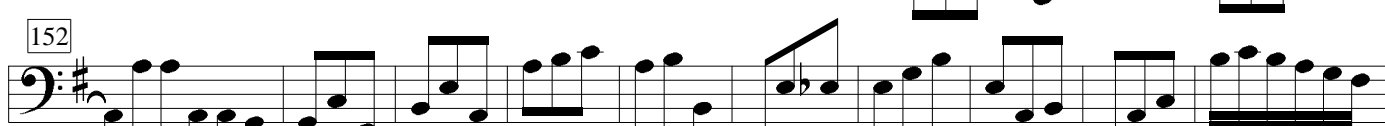
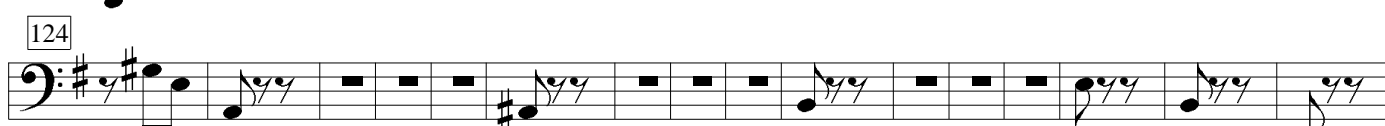
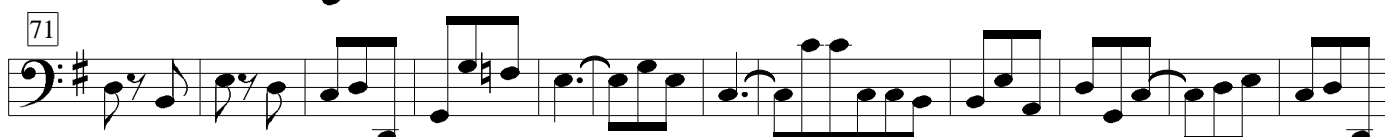
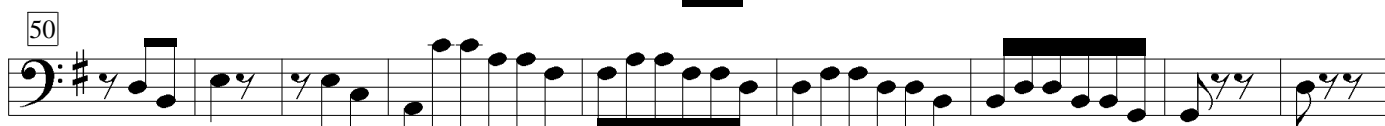
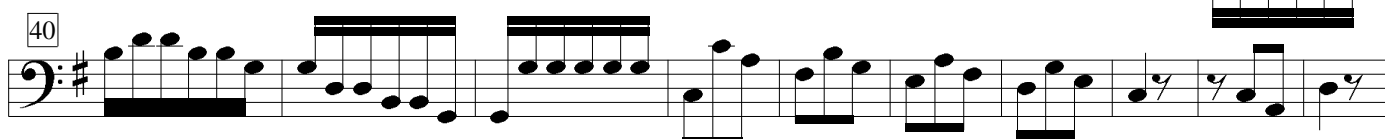
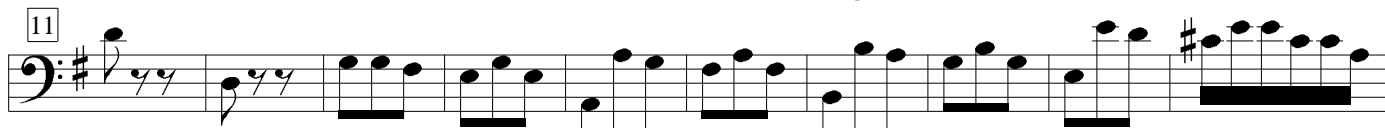


Brandenburgische Konzert Nr. 4

BWV 1049

J. S. Bach

Continuo



162

169

176

185

197

208

219

230

242

255

266

277

286

295

The image displays a page of musical notation for the first part of J.S. Bach's Invention No. 1049. The score is written in bass clef with a key signature of one sharp (F#). It consists of 13 staves, each beginning with a measure number in a box. The notation includes various rhythmic values such as eighth and sixteenth notes, rests, and dynamic markings like accents and slurs. The piece concludes with a double bar line at the end of the 295th measure.

301

309 3 3 3

326

339

349

361

370

380

387

398

407

419

Detailed description: This image shows a page of musical notation for the first part of J.S. Bach's Invention No. 1049. The score is written in bass clef with a key signature of one sharp (F#). It consists of 11 staves of music, each starting with a measure number in a box. The notation includes various rhythmic values, accidentals, and articulation marks. Three specific measures (309, 361, and 370) are marked with a '3' above them, indicating triplet figures. The music is dense and technical, typical of Bach's Invention pieces.