

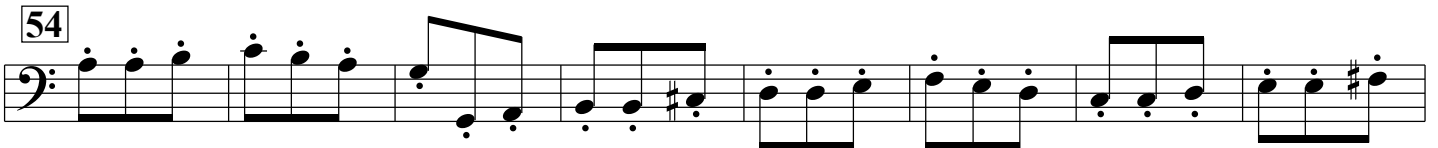
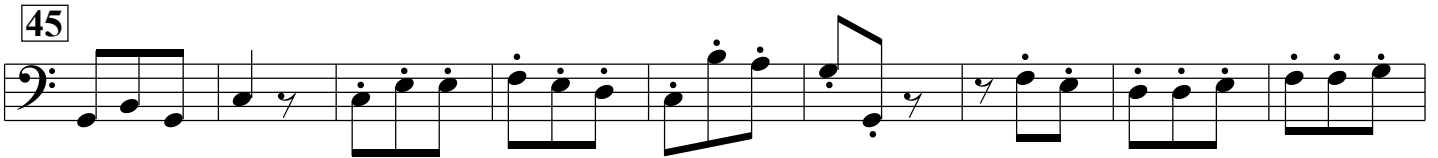
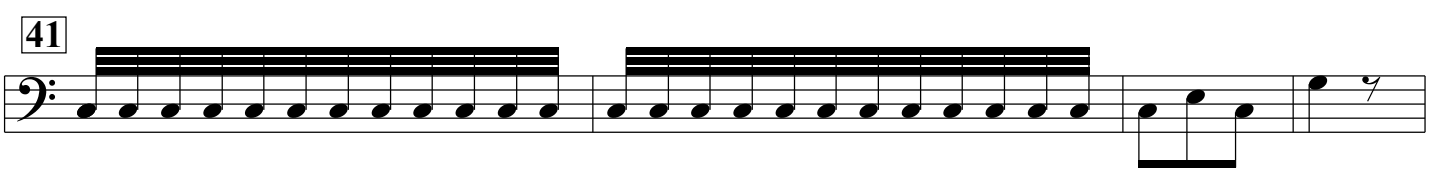
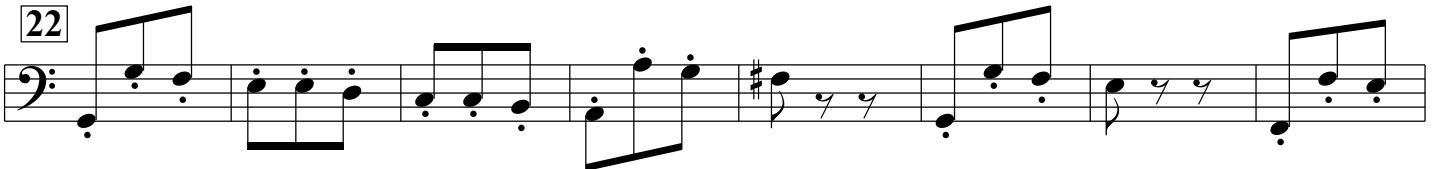
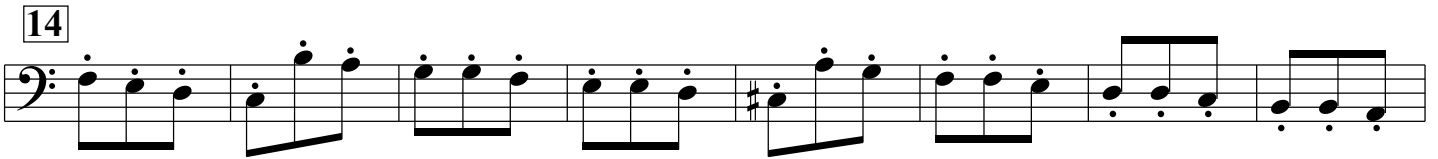
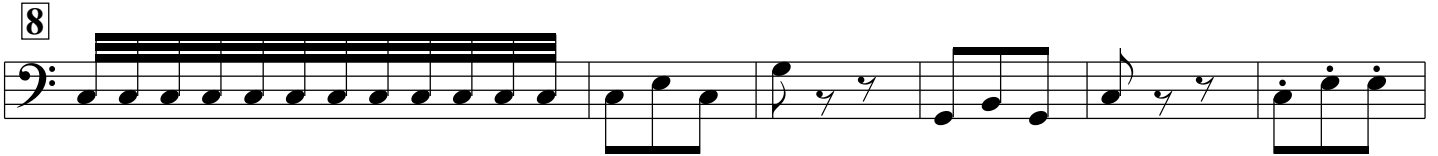
Weihnachts-Oratorium

Johann Sebastian Bach

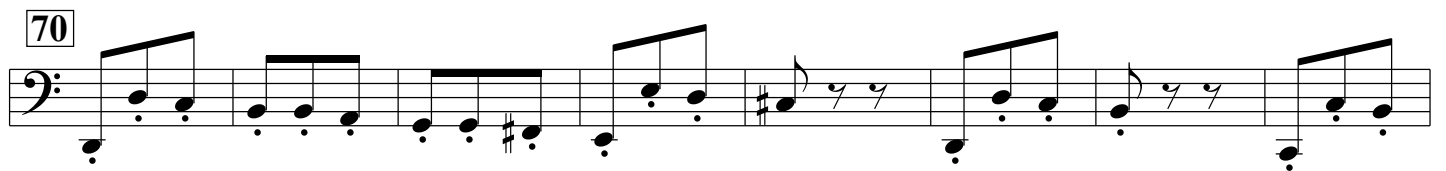
Transponiert und bearbeitet für Schulorchester

1. Coro

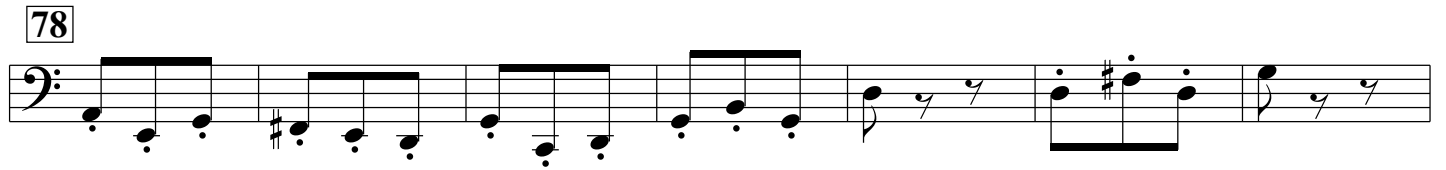
Contrabasso



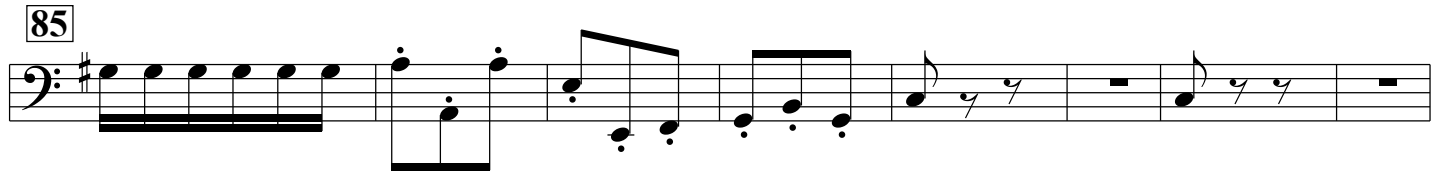
70



78



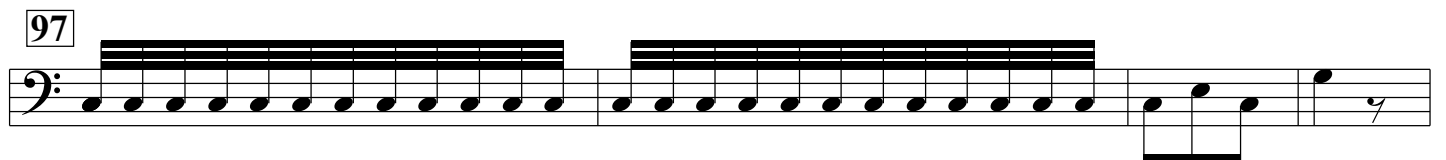
85



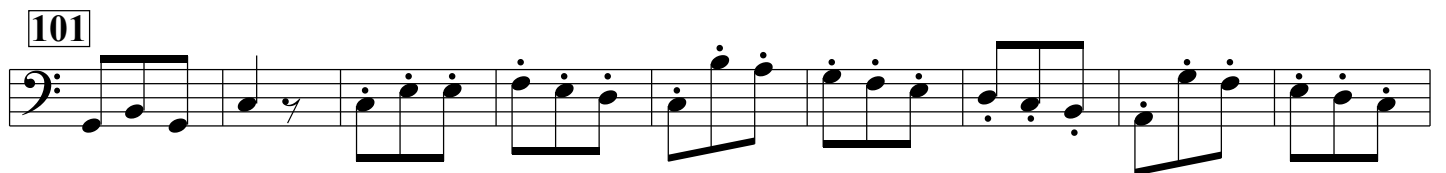
93



97



101



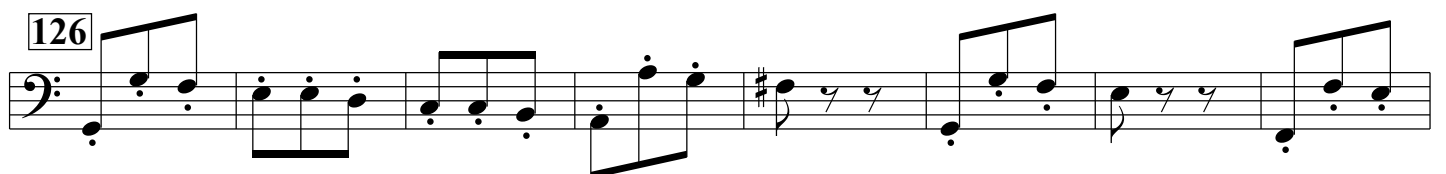
110



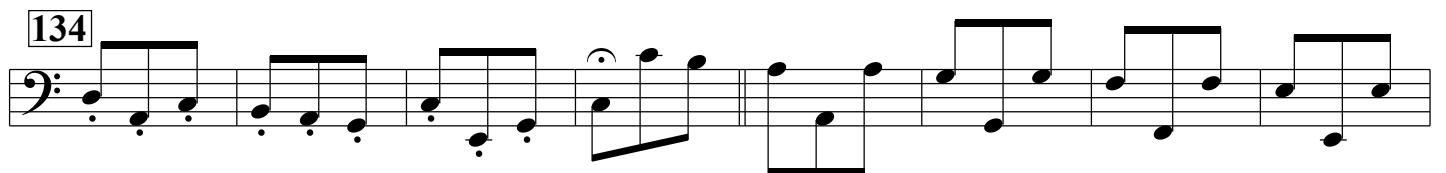
118



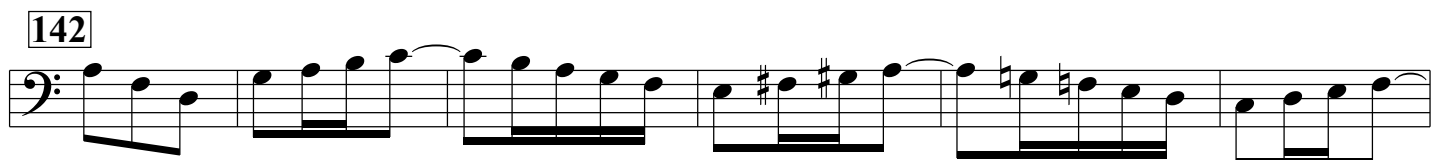
126



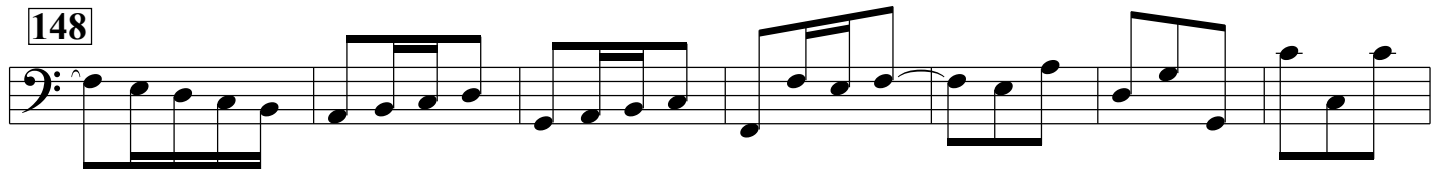
134



142

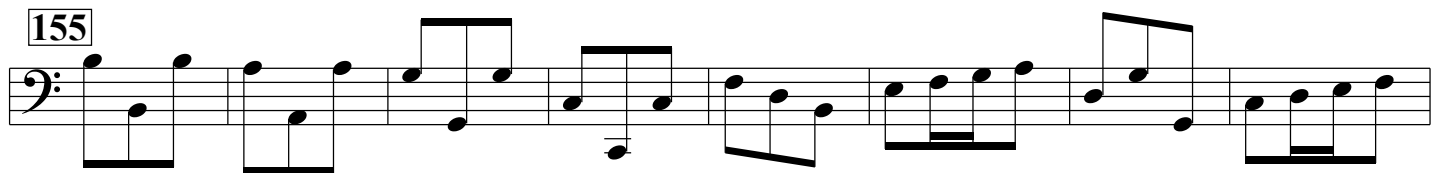


148



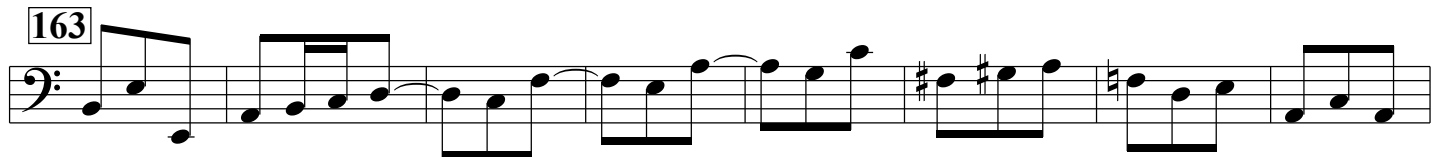
Measure 148: Bass clef, starting with a fermata over the first note. The melody consists of eighth and sixteenth notes.

155



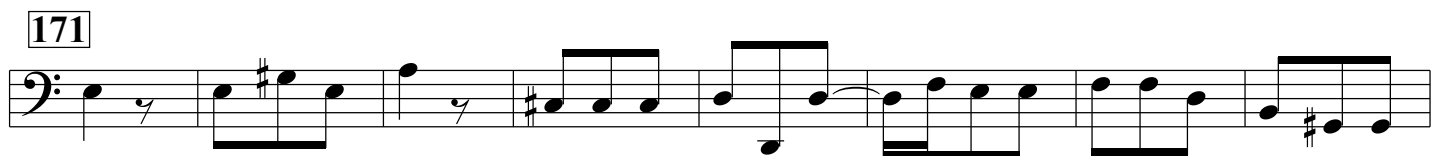
Measure 155: Bass clef, starting with a fermata over the first note. The melody consists of eighth and sixteenth notes.

163



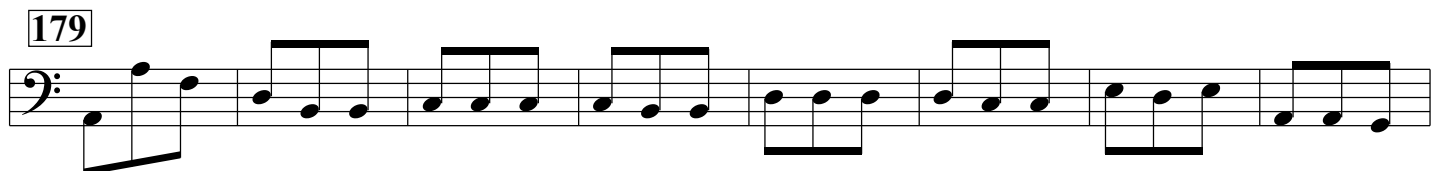
Measure 163: Bass clef, starting with a fermata over the first note. The melody consists of eighth and sixteenth notes, with a key signature change to one sharp (F#) in the second measure.

171



Measure 171: Bass clef, starting with a fermata over the first note. The melody consists of eighth and sixteenth notes, with a key signature change to two sharps (F#, C#) in the second measure.

179



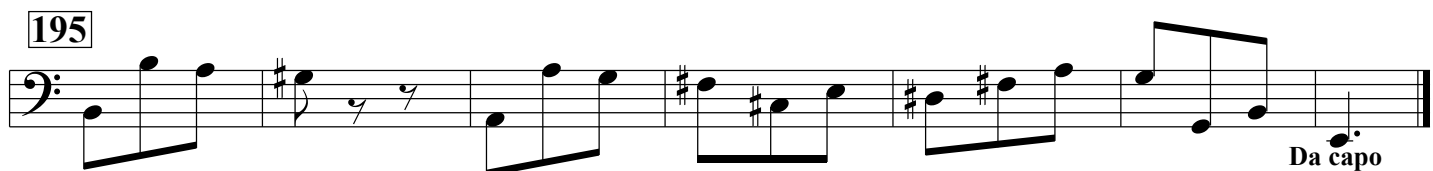
Measure 179: Bass clef, starting with a fermata over the first note. The melody consists of eighth and sixteenth notes.

187



Measure 187: Bass clef, starting with a fermata over the first note. The melody consists of eighth and sixteenth notes, with a key signature change to one sharp (F#) in the second measure.

195



Measure 195: Bass clef, starting with a fermata over the first note. The melody consists of eighth and sixteenth notes, with a key signature change to two sharps (F#, C#) in the second measure. The piece ends with a double bar line and the instruction "Da capo".