

III. BALET^e

Opus 52
Tous

Mr. Boismortier

1. Gaiment

Basse

Musical notation for the first staff, measures 1-6. The key signature is one sharp (F#) and the time signature is 2/2. The notes are: measure 1: whole rest; measure 2: whole rest; measure 3: whole rest; measure 4: quarter notes G3, A3; measure 5: quarter notes B3, C4; measure 6: quarter notes D4, E4.

7

Musical notation for the second staff, measures 7-13. Measure 7 starts with a boxed number '7'. The notes are: measure 7: quarter notes G3, A3; measure 8: quarter notes B3, C4; measure 9: quarter notes D4, E4; measure 10: quarter notes F4, G4; measure 11: quarter notes A4, B4; measure 12: quarter notes C5, B4; measure 13: quarter notes A4, G4.

14

Musical notation for the third staff, measures 14-22. Measure 14 starts with a boxed number '14'. Measure 16 contains a triplet of quarter notes marked with a '3'. The notes are: measure 14: quarter notes G3, A3; measure 15: quarter notes B3, C4; measure 16: triplet of quarter notes D4, E4, F4; measure 17: quarter notes G4, A4; measure 18: quarter notes B4, C5; measure 19: quarter notes D5, C5; measure 20: quarter notes B4, A4; measure 21: quarter notes G4, F4; measure 22: quarter notes E4, D4.

23

Musical notation for the fourth staff, measures 23-29. Measure 23 starts with a boxed number '23'. Measure 25 contains a triplet of quarter notes marked with a '3'. The notes are: measure 23: quarter notes G3, A3; measure 24: quarter notes B3, C4; measure 25: triplet of quarter notes D4, E4, F4; measure 26: quarter notes G4, A4; measure 27: quarter notes B4, C5; measure 28: quarter notes D5, C5; measure 29: quarter notes B4, A4.

30

Musical notation for the fifth staff, measures 30-38. Measure 30 starts with a boxed number '30'. The notes are: measure 30: quarter notes G3, A3; measure 31: quarter notes B3, C4; measure 32: quarter notes D4, E4; measure 33: quarter notes F4, G4; measure 34: quarter notes A4, B4; measure 35: quarter notes C5, B4; measure 36: quarter notes A4, G4; measure 37: quarter notes F4, E4; measure 38: quarter notes D4, C4.

39

Musical notation for the sixth staff, measures 39-45. Measure 39 starts with a boxed number '39'. The notes are: measure 39: quarter notes G3, A3; measure 40: quarter notes B3, C4; measure 41: quarter notes D4, E4; measure 42: quarter notes F4, G4; measure 43: quarter notes A4, B4; measure 44: quarter notes C5, B4; measure 45: quarter notes A4, G4.

46

Musical notation for the seventh staff, measures 46-53. Measure 46 starts with a boxed number '46'. Measure 49 contains the word 'Seul'. The notes are: measure 46: quarter notes G3, A3; measure 47: quarter notes B3, C4; measure 48: quarter notes D4, E4; measure 49: quarter notes F4, G4; measure 50: quarter notes A4, B4; measure 51: quarter notes C5, B4; measure 52: quarter notes A4, G4; measure 53: quarter notes F4, E4.

54

Musical notation for the eighth staff, measures 54-59. Measure 54 starts with a boxed number '54'. The notes are: measure 54: quarter notes G3, A3; measure 55: quarter notes B3, C4; measure 56: quarter notes D4, E4; measure 57: quarter notes F4, G4; measure 58: quarter notes A4, B4; measure 59: quarter notes C5, B4.

60

Musical notation for the ninth staff, measures 60-67. Measure 60 starts with a boxed number '60'. The notes are: measure 60: quarter notes G3, A3; measure 61: quarter notes B3, C4; measure 62: quarter notes D4, E4; measure 63: quarter notes F4, G4; measure 64: quarter notes A4, B4; measure 65: quarter notes C5, B4; measure 66: quarter notes A4, G4; measure 67: quarter notes F4, E4.

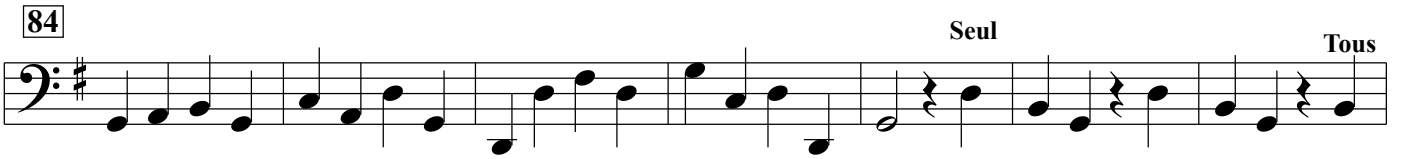
68

Musical notation for the tenth staff, measures 68-74. Measure 68 starts with a boxed number '68'. Measure 71 contains the word 'Tous'. The notes are: measure 68: quarter notes G3, A3; measure 69: quarter notes B3, C4; measure 70: quarter notes D4, E4; measure 71: quarter notes F4, G4; measure 72: quarter notes A4, B4; measure 73: quarter notes C5, B4; measure 74: quarter notes A4, G4.

76



84



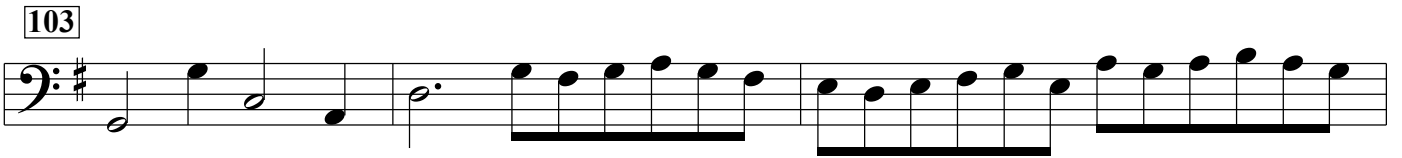
91



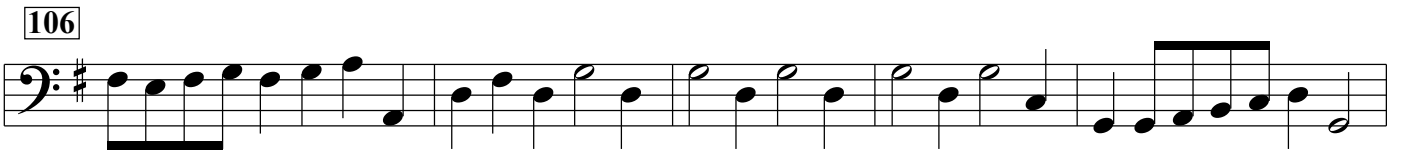
97



103



106



111

