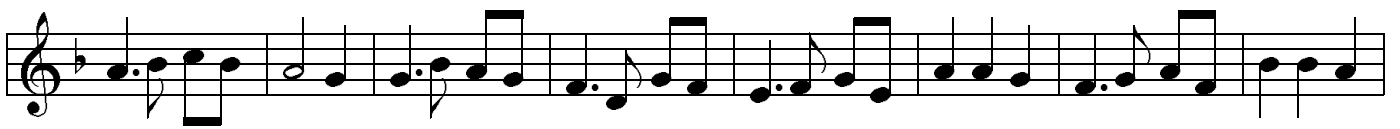
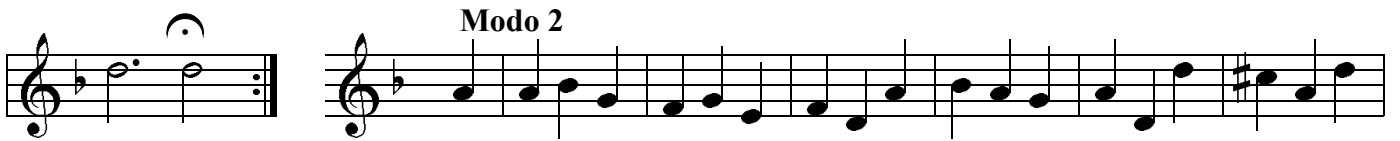
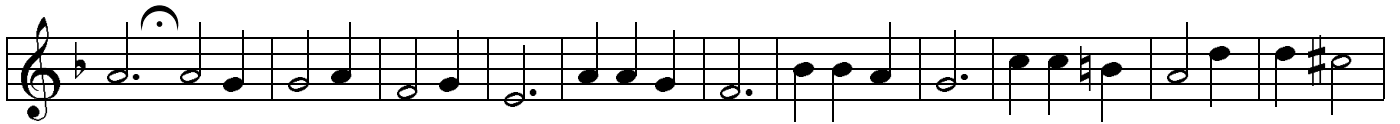


Lavignone



A musical score consisting of five staves of music. The notation is in a single system, with each staff containing a line of music. The music is written in a treble clef with a key signature of one flat (B-flat). The first staff begins with a treble clef and a B-flat key signature. The music features a variety of note values, including quarter, eighth, and sixteenth notes, as well as rests. There are several measures with beamed eighth notes, suggesting a rhythmic pattern. The second staff contains a repeat sign (double bar line with dots) in the middle. The fifth staff ends with a double bar line and repeat dots. The overall style is characteristic of 17th-century Dutch lute tablature transcriptions.