

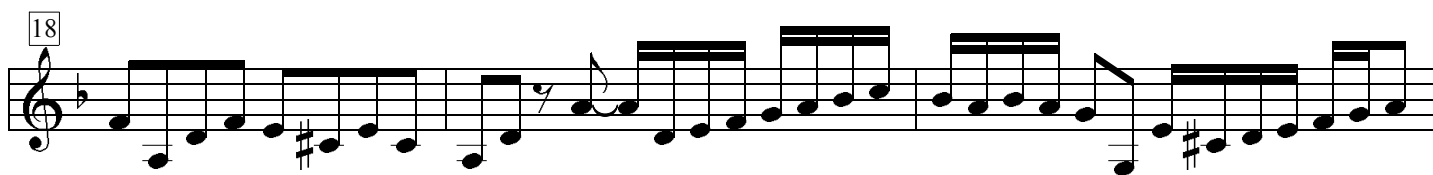
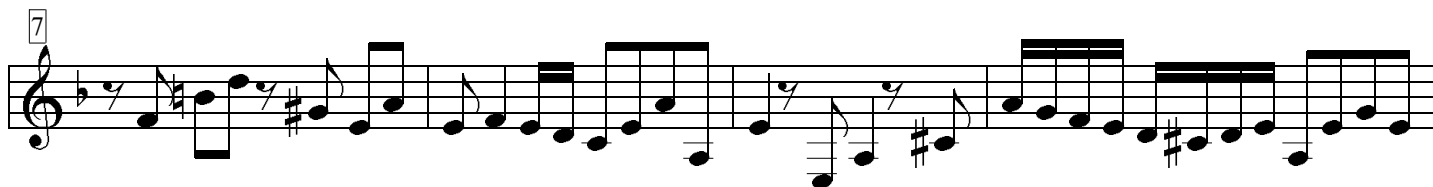
# Concerto

BWV 1043

J. S. Bach

## 1. Vivace

Viola



39 *2 p* *2 f*

47 *p* *f*

54

58 *p*

65

68 *2*

73 *2*

78 *2* *2 f*

86

Detailed description: This image shows a page of musical notation for the first movement of J.S. Bach's Invention No. 10 (BWV 1043 I), page 2. The score is written in treble clef with a key signature of one flat (B-flat major or D minor). It consists of nine staves of music, each starting with a measure number in a box. The notation includes various rhythmic values such as eighth and sixteenth notes, rests, and slurs. Dynamic markings like *p* (piano) and *f* (forte) are placed above the notes. Fingerings are indicated by the number '2' above specific notes. The piece concludes with a double bar line at the end of the ninth staff.