

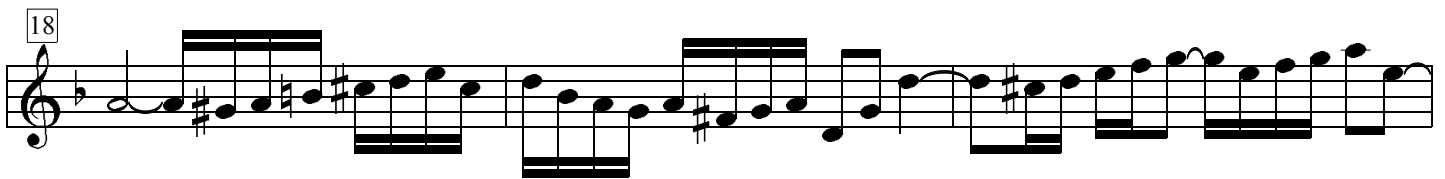
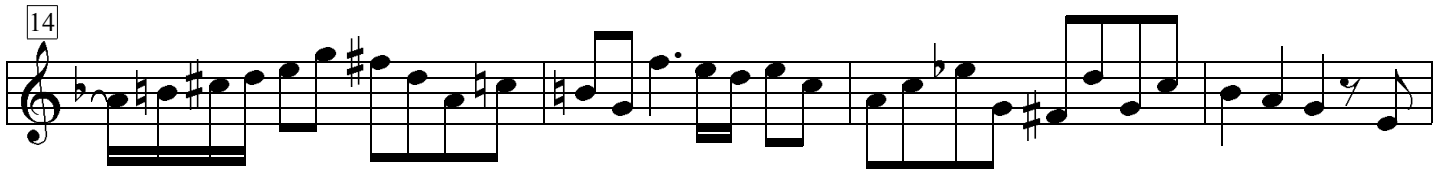
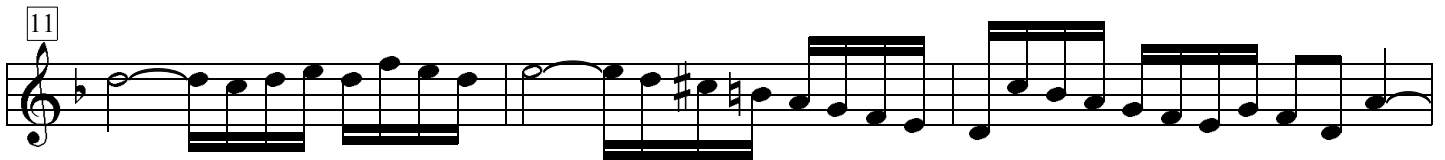
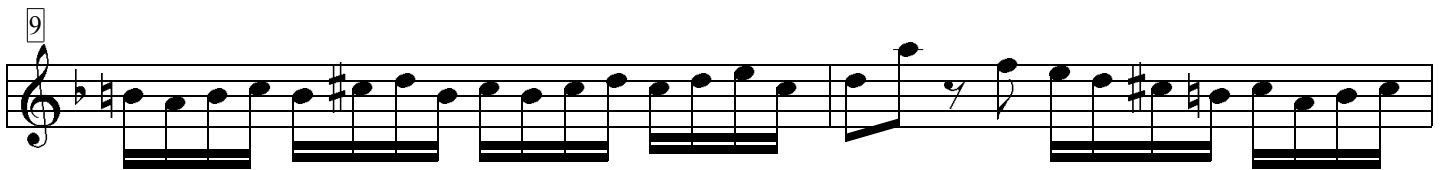
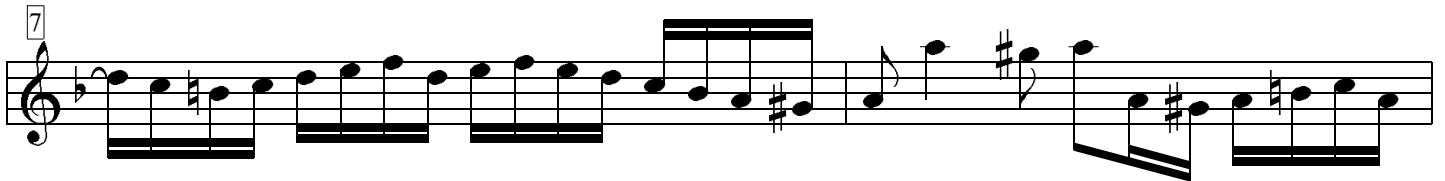
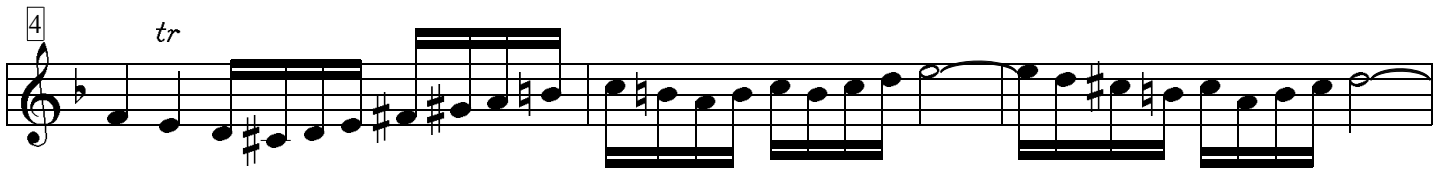
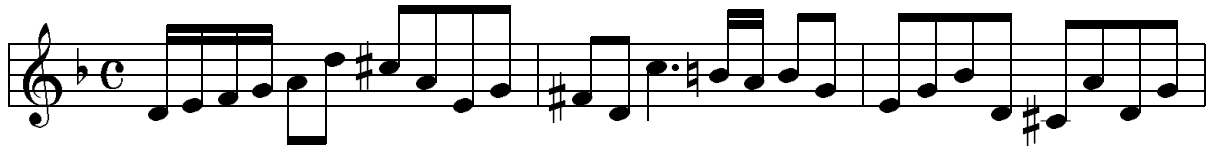
Concerto

BWV 1043

J. S. Bach

1. Vivace

Violino 2



39 *2 p* *2 f*

47

52 *f*

57 *p*

63

66

69 *2*

74 *2 2*

81 *2 f*

87

Detailed description: This image shows a page of musical notation for the first part of the Invention in G major, BWV 1043, page 2. The score is written on a single treble clef staff with a key signature of one flat (F major) and a common time signature. The piece is in a 3/4 time signature. The notation includes various rhythmic values such as eighth and sixteenth notes, often beamed together. There are several dynamic markings: *p* (piano) at measures 39, 57, and 81; *f* (forte) at measures 52 and 81. There are also several accents and slurs. The piece concludes with a final cadence in measure 90, marked with a double bar line and repeat dots.