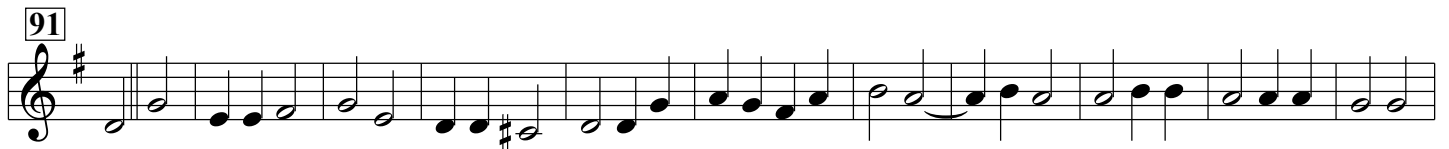
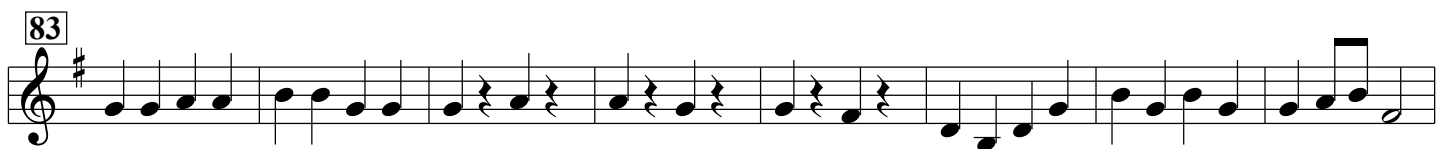
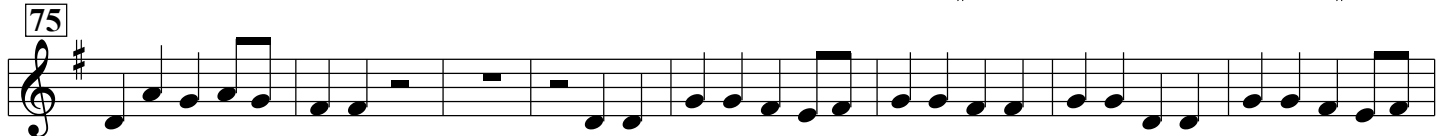
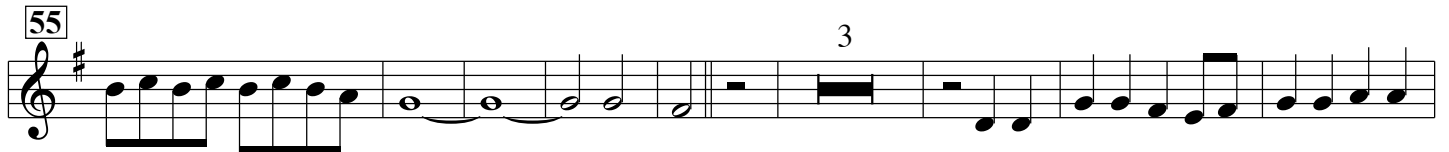
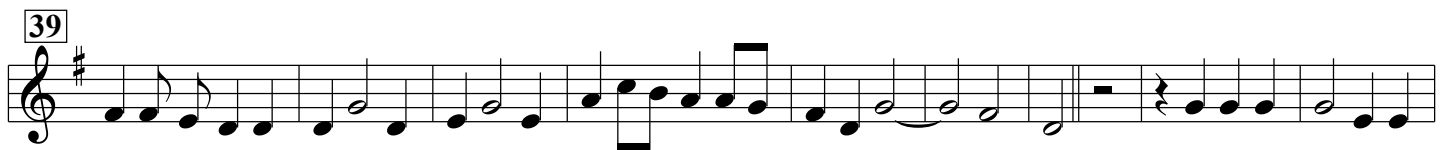
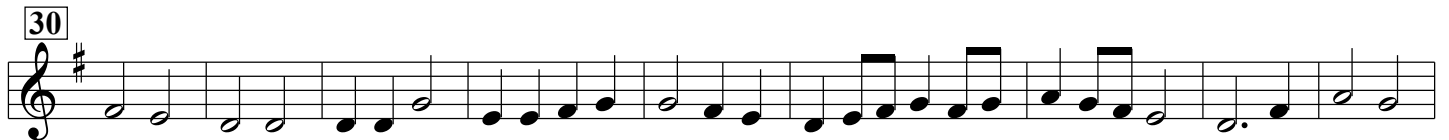
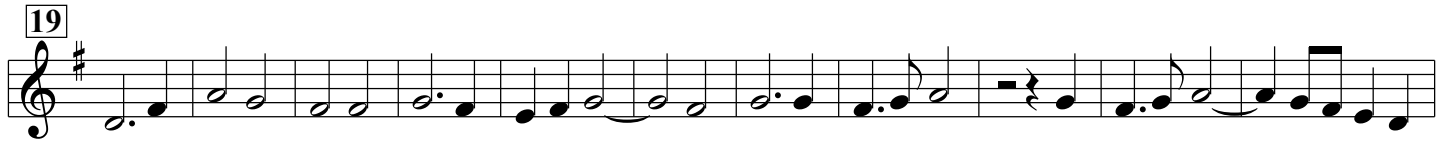


2. Gloria

Violino 2 / Oboe 2



124

136

148

160 164 7

177

189

196

203

209

218

226

231

238

Detailed description: This image shows a page of musical notation for a Gloria by Georg Philipp Telemann. The score is written in a single system with ten staves, each beginning with a measure number in a box. The key signature is one sharp (F#), and the time signature is 3/4. The notation includes various note values (quarter, eighth, sixteenth notes), rests, and dynamic markings. A fermata is placed over the final note of the last staff. The music features a mix of melodic lines and rhythmic patterns, including some sixteenth-note passages.