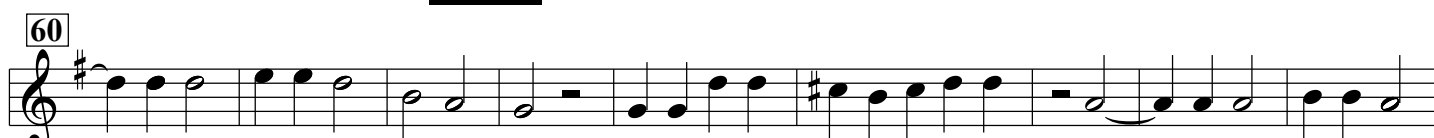
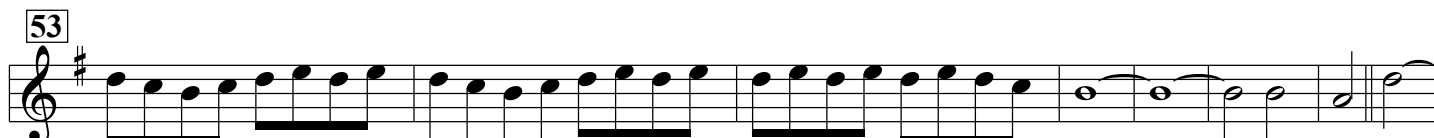


2. Gloria

Violino 1 / Oboe 1



121 3

134

144

154 164 10

175

185 189 7

201

207

212 2

220

225

231

238

Detailed description: This image shows a page of musical notation for Telemann's Gloria, page 2. The score is written in treble clef with a key signature of one sharp (F#). It consists of ten staves of music, each starting with a measure number in a box. The first staff (121) features a triplet of eighth notes. The second staff (134) has a measure rest. The third staff (144) continues the melodic line. The fourth staff (154) includes a measure rest and a ten-measure rest. The fifth staff (175) shows a melodic phrase. The sixth staff (185) contains a seven-measure rest. The seventh staff (201) has a measure rest. The eighth staff (207) features a seven-measure rest. The ninth staff (212) includes a two-measure rest. The tenth staff (220) continues the melodic line. The eleventh staff (225) has a measure rest. The twelfth staff (231) continues the melodic line. The thirteenth staff (238) ends with a final note. The notation includes various note values, rests, and articulation marks.