

Wie soll ich dich empfangen

Dietrich Buxtehude

Sonata

Fagotto



7



14

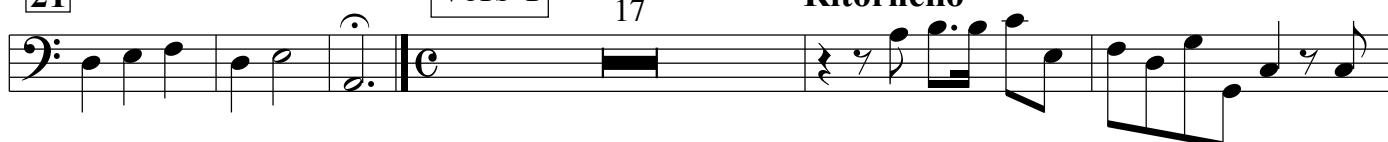


21

Vers 1

17

Ritornello



43



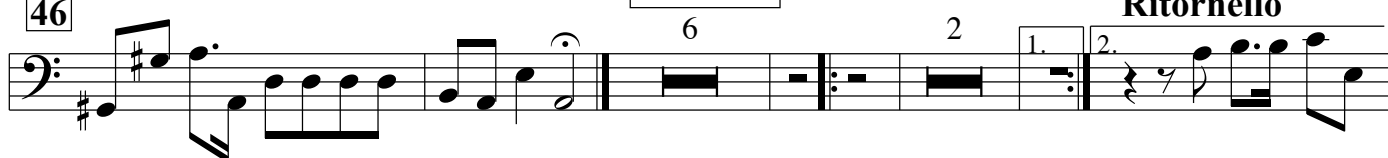
46

Vers 2/3

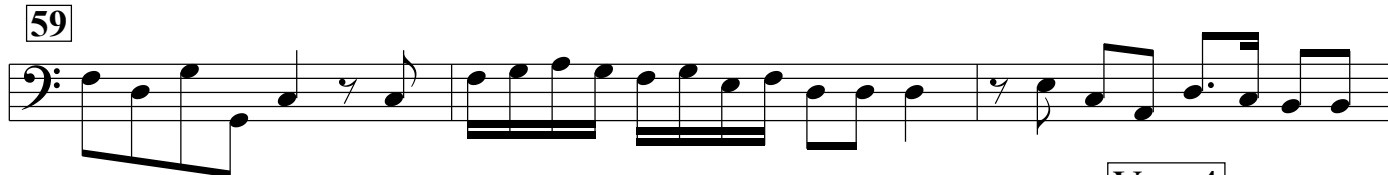
6

2

Ritornello



59



62

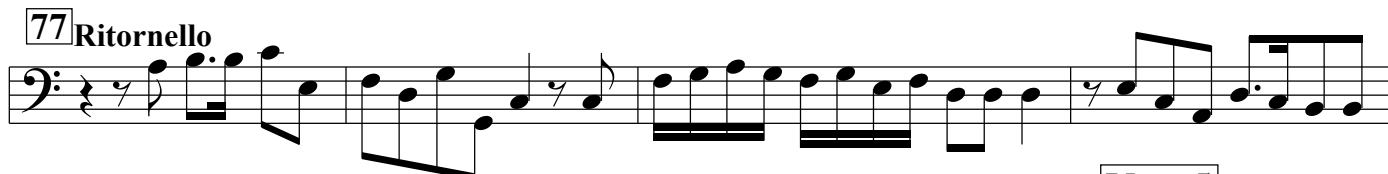
Vers 4

12



77

Ritornello



81

Vers 5

12



96 Ritornello

Musical notation for Ritornello 96, bass clef, 3/4 time signature. The piece consists of 12 measures. The first measure has a 7-measure rest. The melody features eighth and sixteenth notes, with a repeat sign at the end.

100

Vers 6

12

Musical notation for Vers 6, bass clef, 3/4 time signature. The piece consists of 12 measures. The first measure has a 7-measure rest. The melody features eighth and sixteenth notes, with a sharp sign in the fourth measure and a repeat sign at the end.

115 Ritornello

Musical notation for Ritornello 115, bass clef, 3/4 time signature. The piece consists of 12 measures. The first measure has a 7-measure rest. The melody features eighth and sixteenth notes, with a repeat sign at the end.

119

Musical notation for Vers 6 (119), bass clef, 3/4 time signature. The piece consists of 12 measures. The first measure has a 7-measure rest. The melody features eighth and sixteenth notes, with a sharp sign in the fourth measure and a repeat sign at the end.