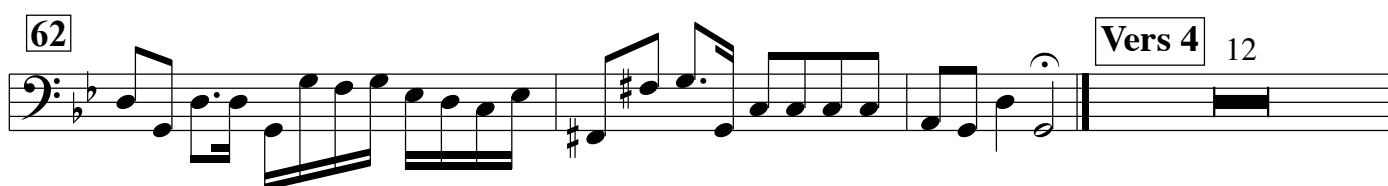
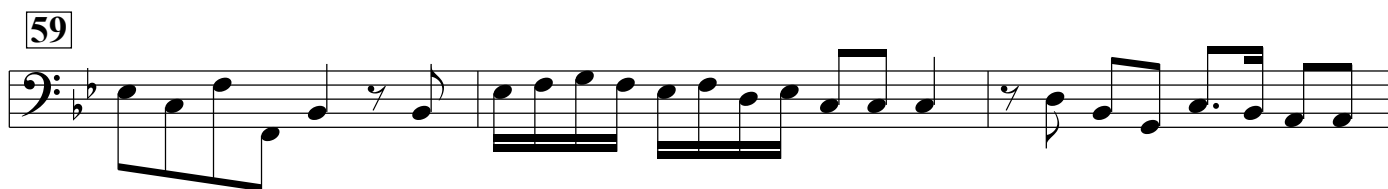
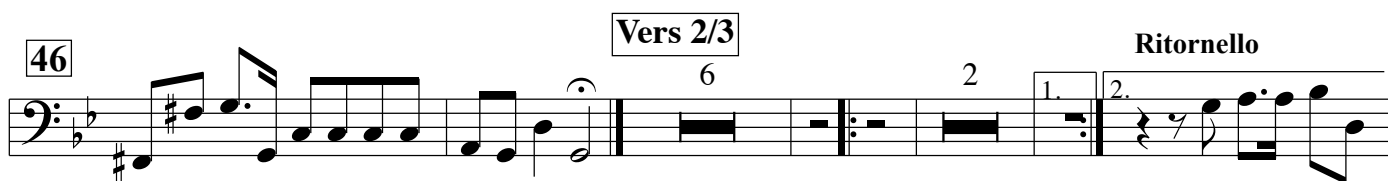
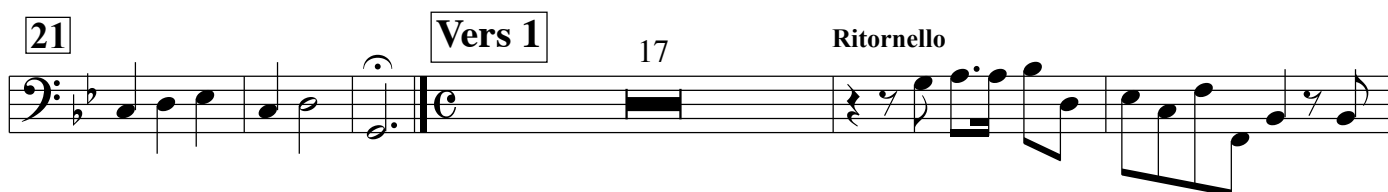
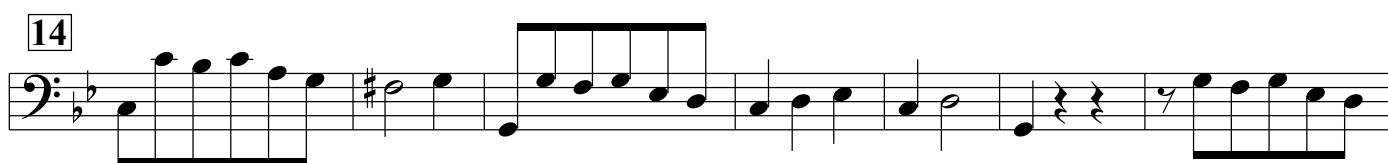


# Wie soll ich dich empfangen

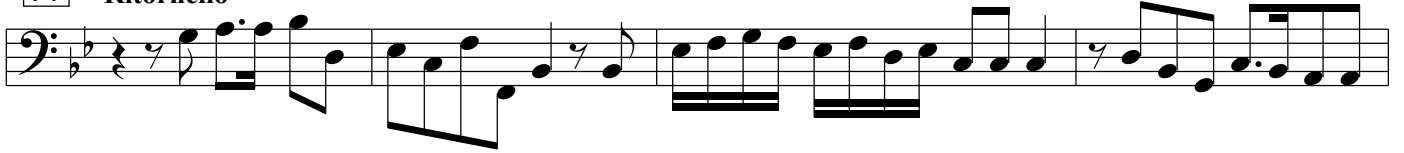
Dietrich Buxtehude

## Sonata

Fagotto

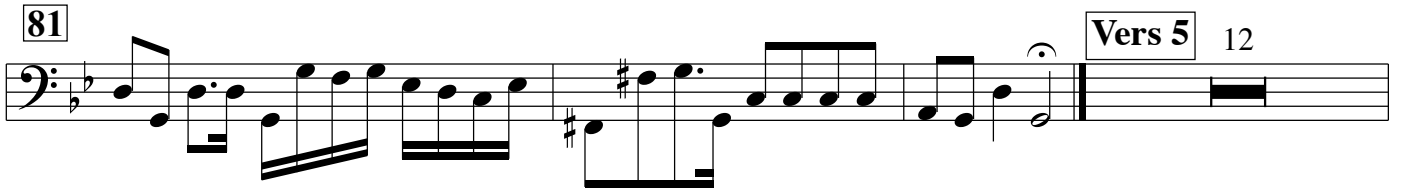


77 Ritornello



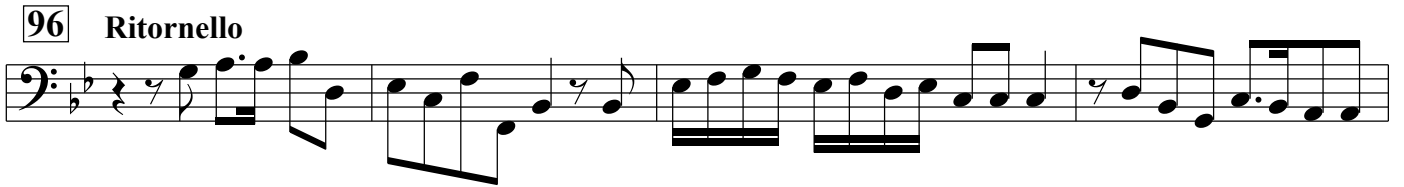
Musical notation for Ritornello 77, featuring a bass clef, a key signature of two flats, and a 7/8 time signature. The piece consists of a single melodic line with various rhythmic patterns, including eighth and sixteenth notes, and rests.

81



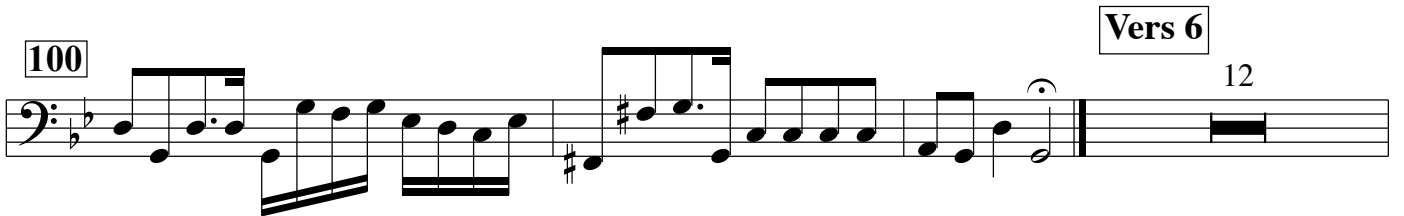
Musical notation for Vers 5, starting at measure 81. It features a bass clef, a key signature of two flats, and a 7/8 time signature. The notation includes a key signature change to one flat and a repeat sign at the end, with a '12' indicating the number of measures in the section.

96 Ritornello



Musical notation for Ritornello 96, featuring a bass clef, a key signature of two flats, and a 7/8 time signature. The piece consists of a single melodic line with various rhythmic patterns, including eighth and sixteenth notes, and rests.

100



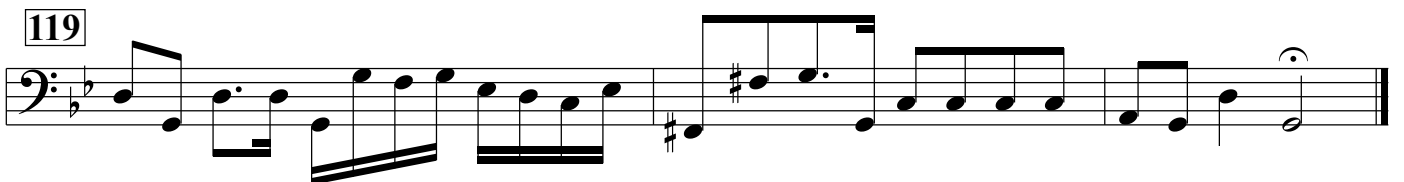
Musical notation for Vers 6, starting at measure 100. It features a bass clef, a key signature of two flats, and a 7/8 time signature. The notation includes a key signature change to one flat and a repeat sign at the end, with a '12' indicating the number of measures in the section.

115 Ritornello



Musical notation for Ritornello 115, featuring a bass clef, a key signature of two flats, and a 7/8 time signature. The piece consists of a single melodic line with various rhythmic patterns, including eighth and sixteenth notes, and rests.

119



Musical notation for Vers 6, starting at measure 119. It features a bass clef, a key signature of two flats, and a 7/8 time signature. The notation includes a key signature change to one flat and a repeat sign at the end, with a '12' indicating the number of measures in the section.