

## Versus II

Basso continuo



7



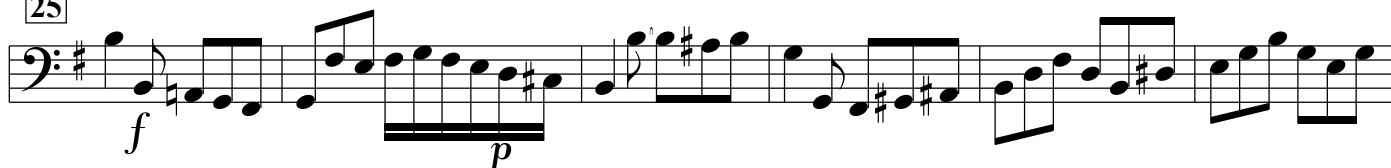
12



18



25



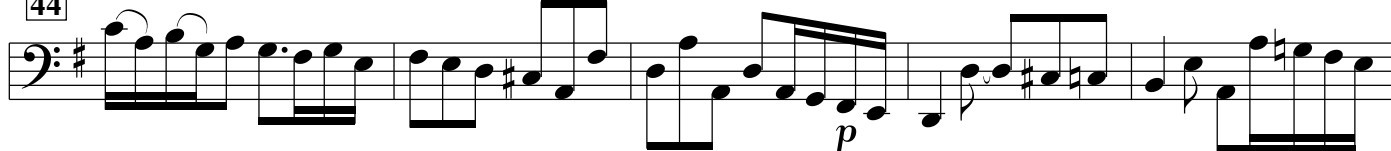
31



37



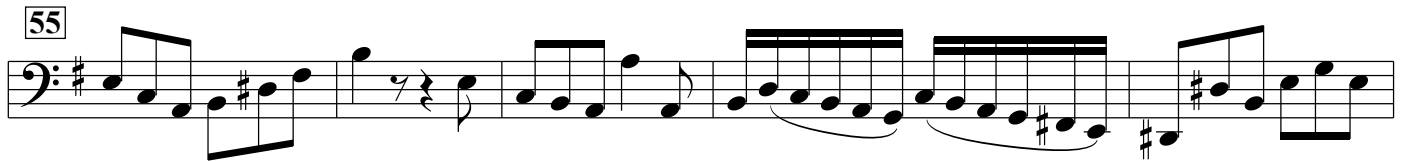
44



49

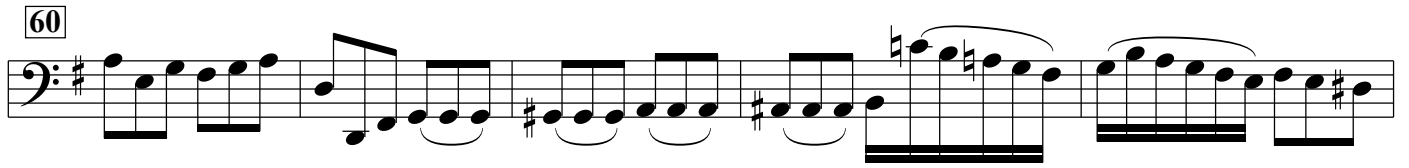


55



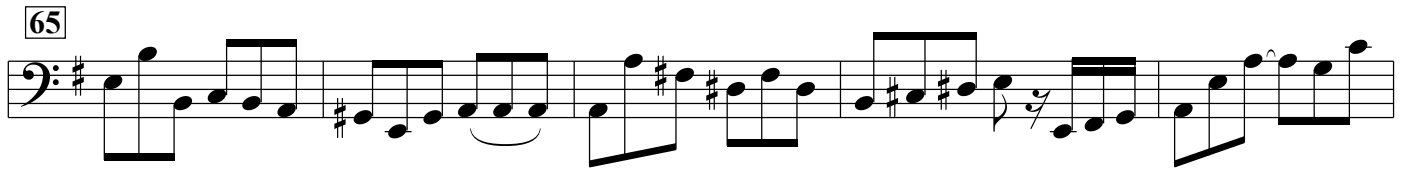
Measure 55: Bass clef, key signature of one sharp (F#). The measure contains a sequence of eighth and sixteenth notes, including a triplet of eighth notes and a sixteenth-note triplet. The staff ends with a double bar line.

60



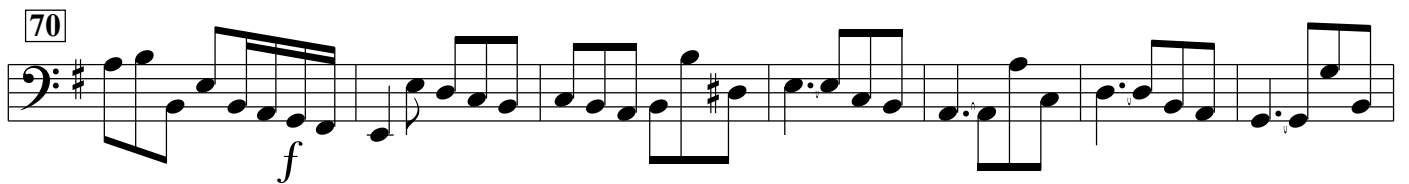
Measure 60: Bass clef, key signature of one sharp (F#). The measure contains a sequence of eighth and sixteenth notes, including a triplet of eighth notes and a sixteenth-note triplet. The staff ends with a double bar line.

65



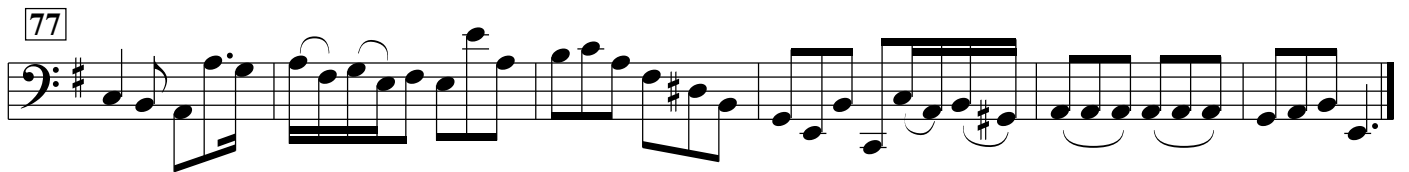
Measure 65: Bass clef, key signature of one sharp (F#). The measure contains a sequence of eighth and sixteenth notes, including a triplet of eighth notes and a sixteenth-note triplet. The staff ends with a double bar line.

70



Measure 70: Bass clef, key signature of one sharp (F#). The measure contains a sequence of eighth and sixteenth notes, including a triplet of eighth notes and a sixteenth-note triplet. The staff ends with a double bar line. A dynamic marking *f* (forte) is placed below the first few notes.

77



Measure 77: Bass clef, key signature of one sharp (F#). The measure contains a sequence of eighth and sixteenth notes, including a triplet of eighth notes and a sixteenth-note triplet. The staff ends with a double bar line.