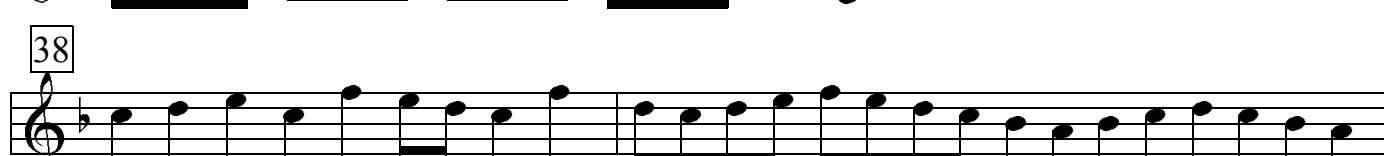
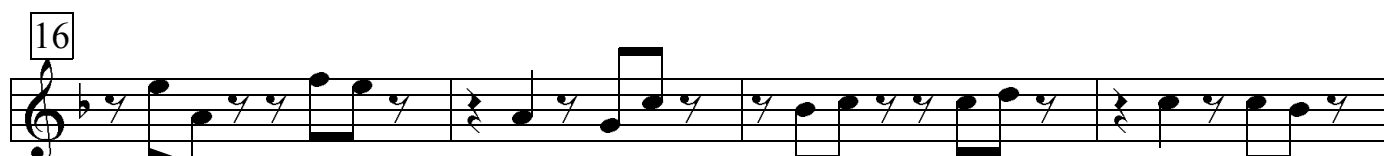


21. Coro

Ehre sei Gott in der Höhe

Johann Sebastian Bach

Flauto traverso 2



Musical score for BWV 248: Nr. 21, p. 2, measures 40-62. The score is written in treble clef with a key signature of one flat (B-flat) and a common time signature (C). The music consists of eight staves, each starting with a measure number in a box: 40, 42, 44, 47, 50, 54, 58, and 62. The notation includes various rhythmic values such as eighth, sixteenth, and thirty-second notes, as well as rests and accidentals. The piece concludes with a final whole note chord on the eighth staff.