

1. Coro

Weihnachts-Oratorium

Erster Teil

Johann Sebastian Bach

Basso Continuo

8

14

19

24

29

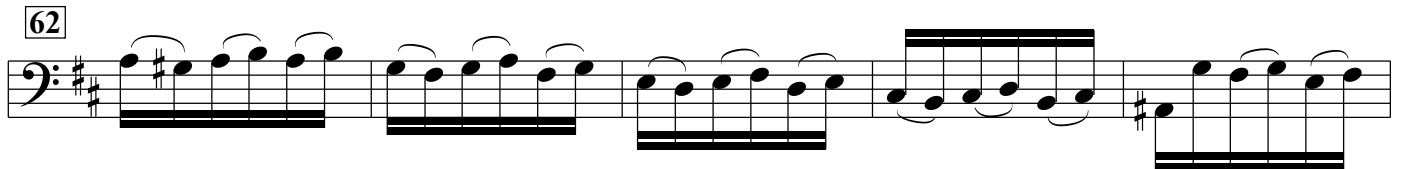
40

47

52

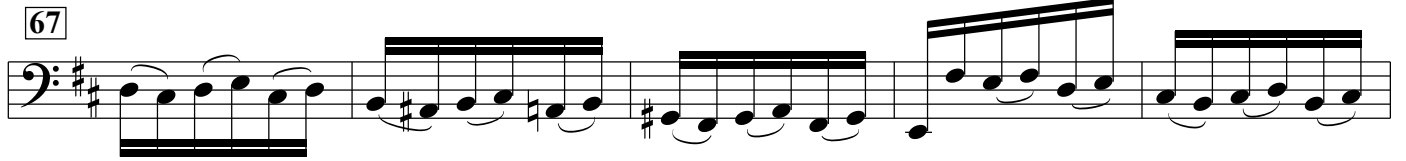
57

62



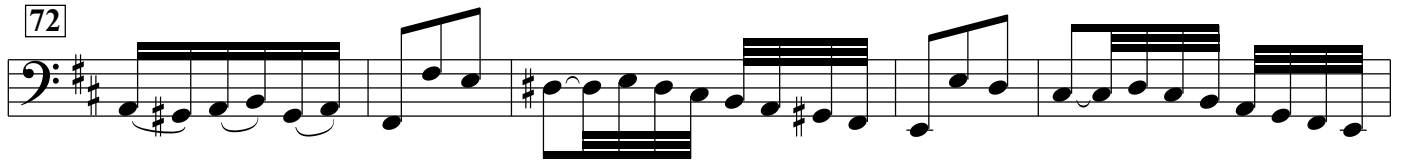
Musical notation for measure 62, featuring a bass clef, a key signature of two sharps (F# and C#), and a series of eighth notes with slurs.

67



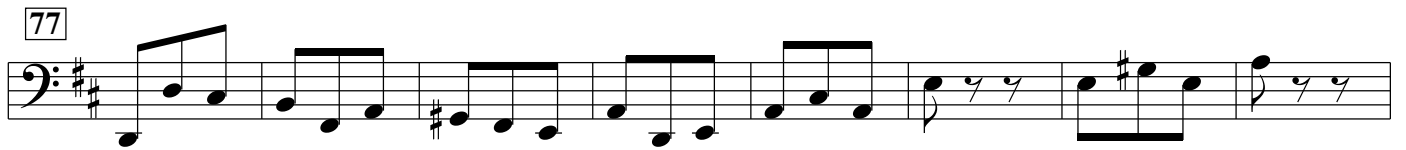
Musical notation for measure 67, featuring a bass clef, a key signature of two sharps, and eighth notes with slurs.

72



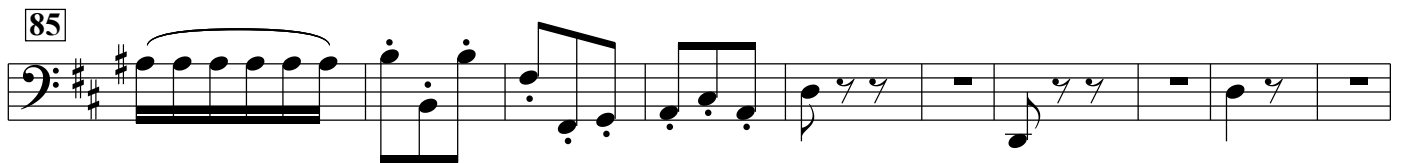
Musical notation for measure 72, featuring a bass clef, a key signature of two sharps, and eighth notes with slurs.

77



Musical notation for measure 77, featuring a bass clef, a key signature of two sharps, and eighth notes with slurs.

85



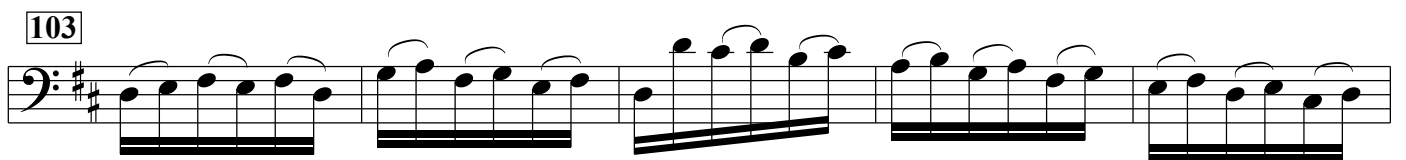
Musical notation for measure 85, featuring a bass clef, a key signature of two sharps, and eighth notes with slurs.

95



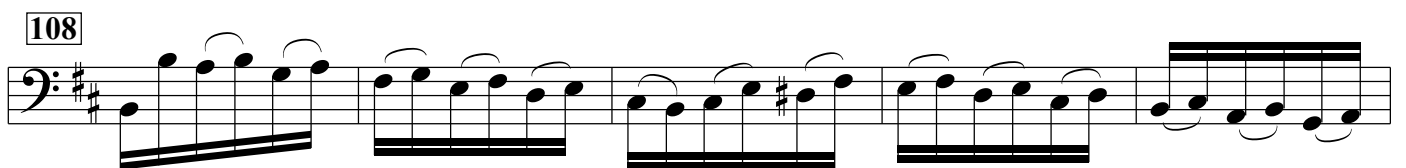
Musical notation for measure 95, featuring a bass clef, a key signature of two sharps, and eighth notes with slurs.

103



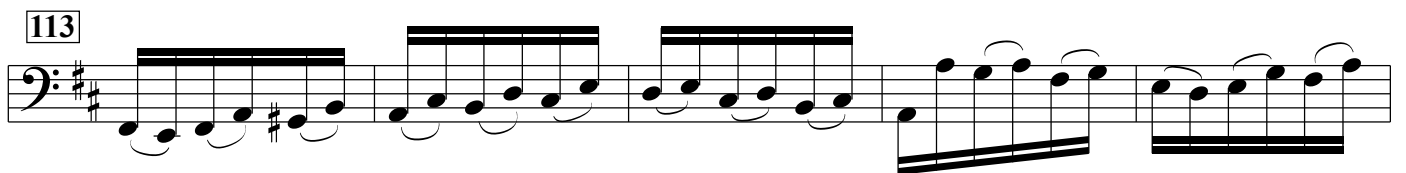
Musical notation for measure 103, featuring a bass clef, a key signature of two sharps, and eighth notes with slurs.

108



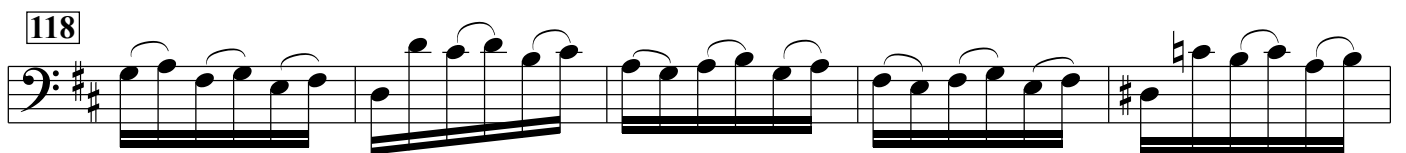
Musical notation for measure 108, featuring a bass clef, a key signature of two sharps, and eighth notes with slurs.

113



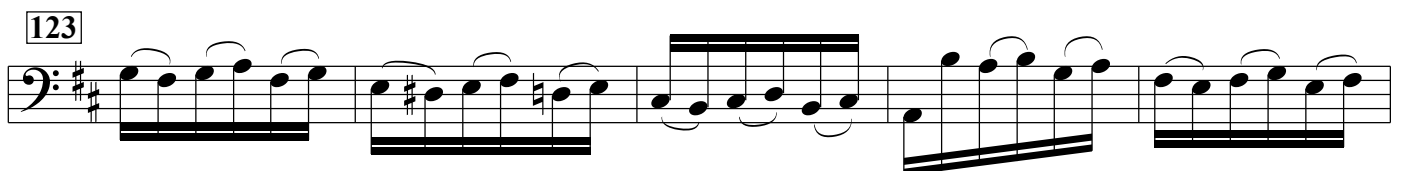
Musical notation for measure 113, featuring a bass clef, a key signature of two sharps, and eighth notes with slurs.

118



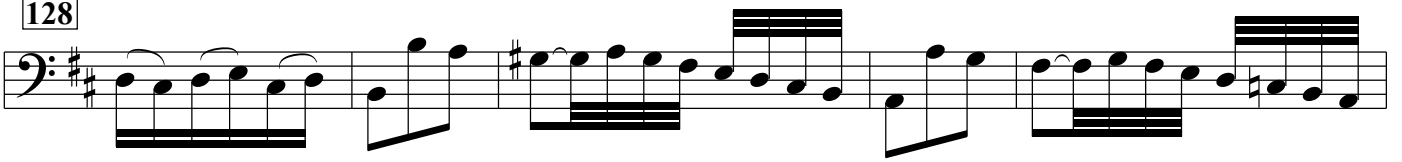
Musical notation for measure 118, featuring a bass clef, a key signature of two sharps, and eighth notes with slurs.

123

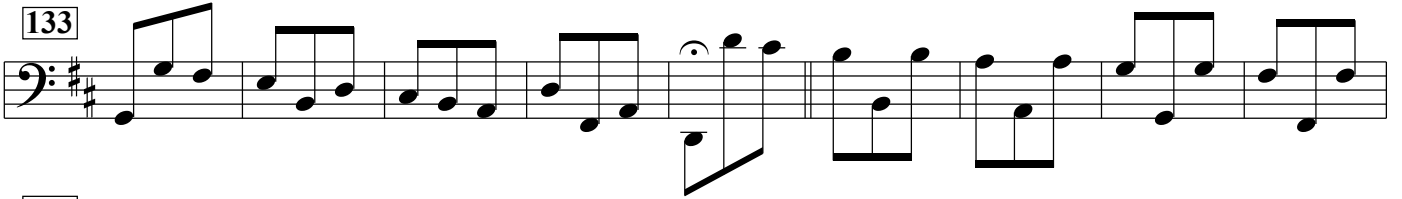


Musical notation for measure 123, featuring a bass clef, a key signature of two sharps, and eighth notes with slurs.

128



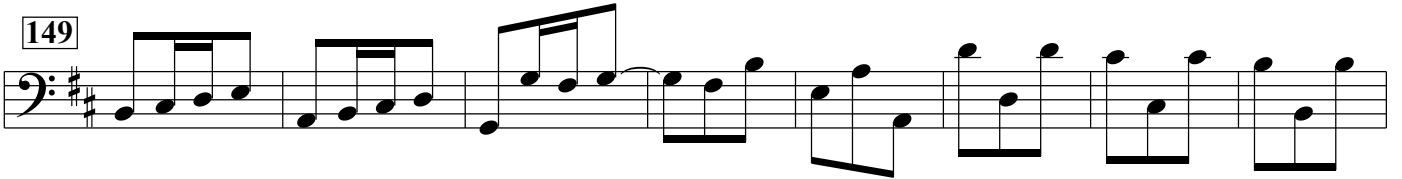
133



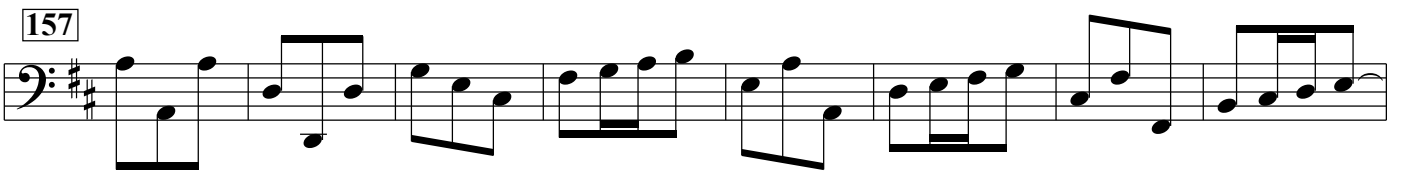
142



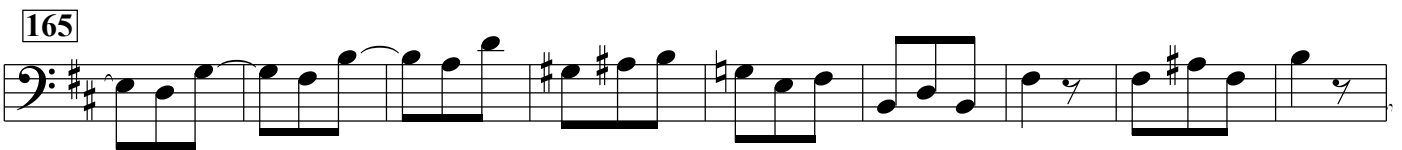
149



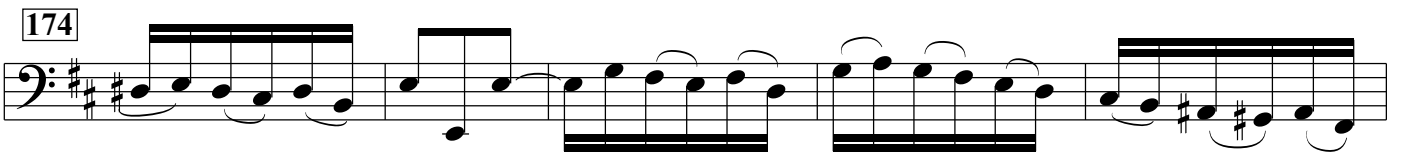
157



165



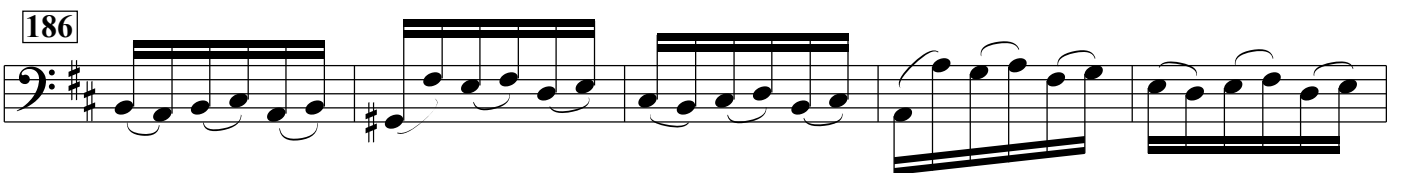
174



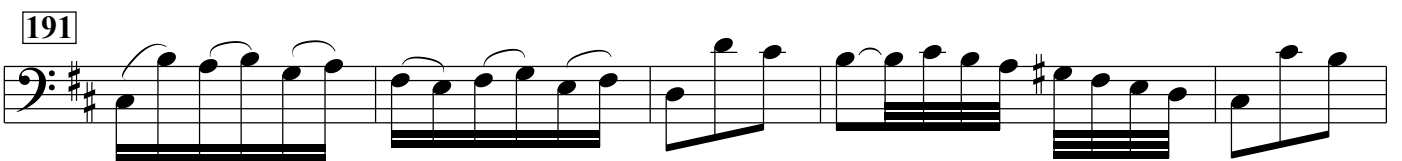
179



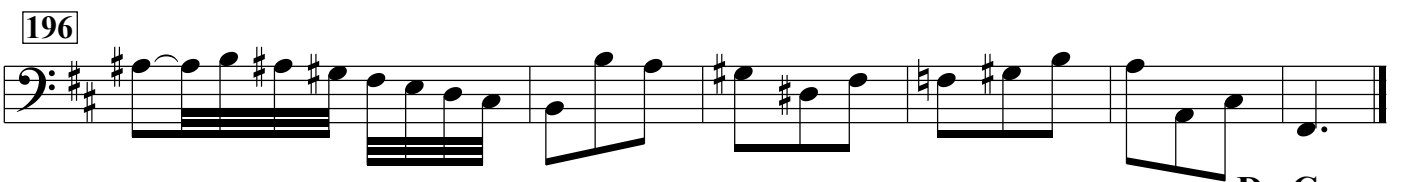
186



191



196



Da Capo