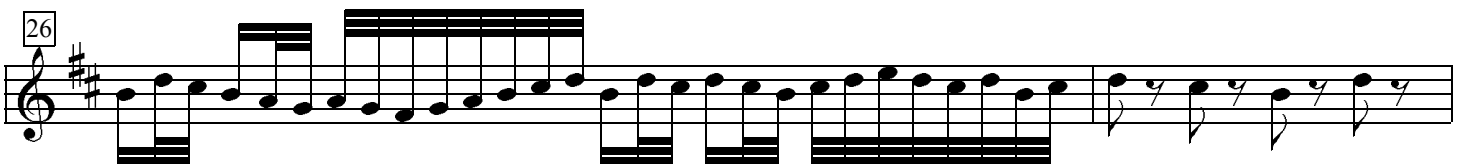
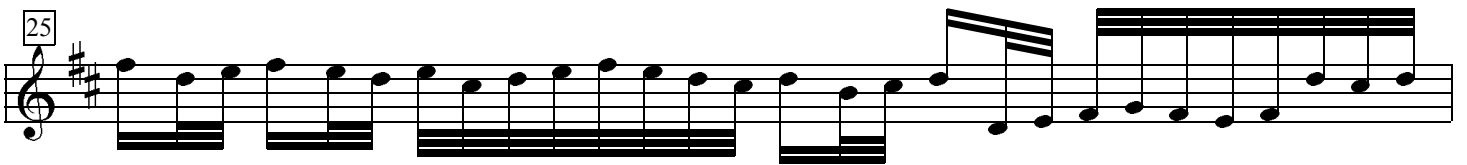
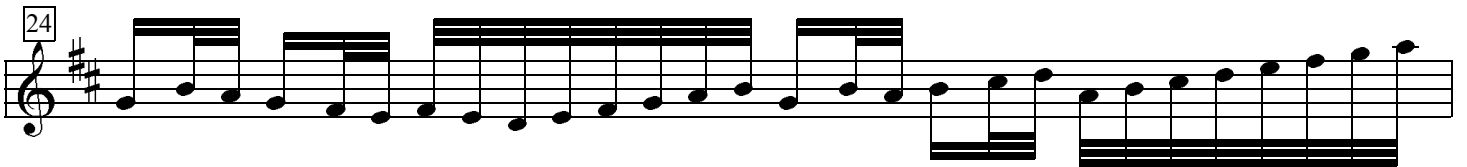
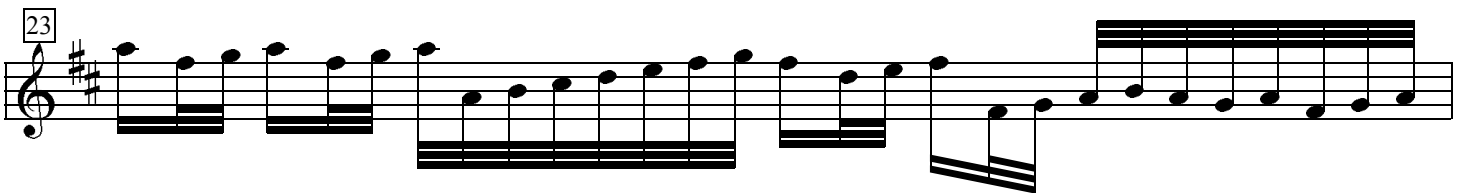
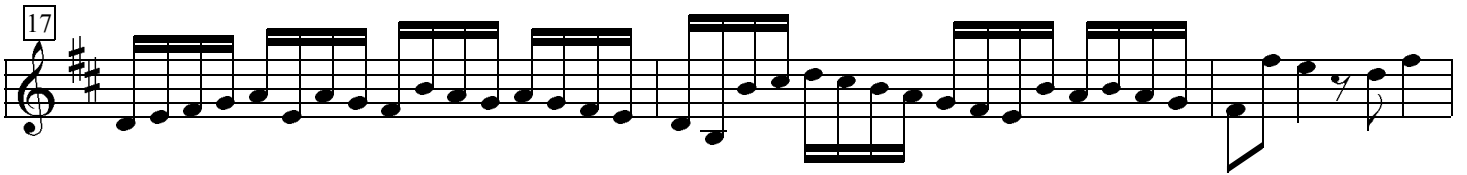
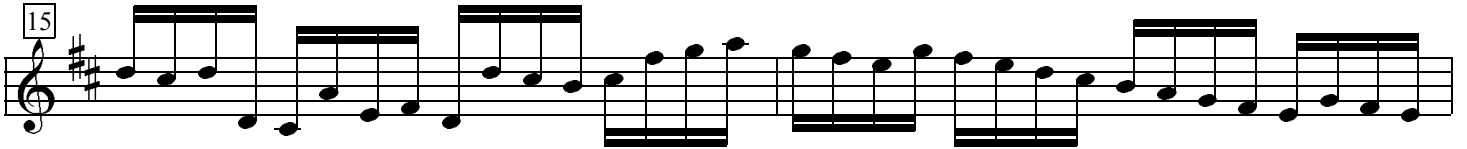
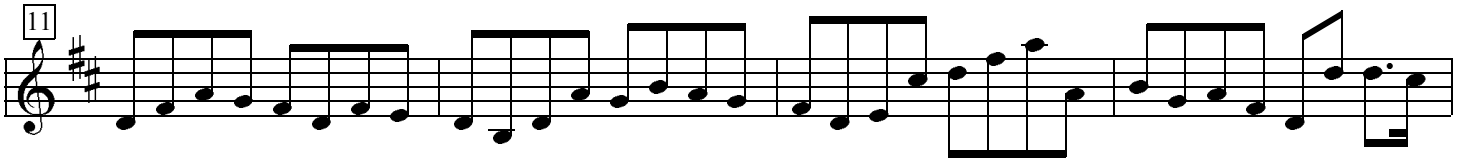


# Kanon und Gigue

Johann Pachelbel

Violino 3



This image shows a page of musical notation for Pachelbel's Canon, page 2. The score is written in treble clef with a key signature of two sharps (F# and C#). It consists of nine staves of music, each starting with a measure number in a box: 31, 33, 35, 37, 39, 41, 43, 48, and 52. The notation includes various rhythmic patterns such as eighth and sixteenth notes, often beamed together, and rests. The music is a single melodic line, characteristic of the Canon's structure.